

Watch Movement Specification and Drawing

**MINI & SLIM**

# **Cal. VX10A**

**Movement Size**

**5 1/2'''**

**Casing Diameter**

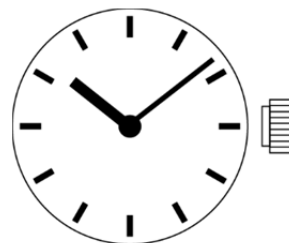
**11.8 × 15.15 mm**

**Height**

**2.19mm**

**Battery Life**

**3 years**



Date: 27/Feb./'15

# Cal. VX10A

Items	Rev.	Page
Specifications	04	1
Appearance	07	2
Casing	06	3
Hand fitting	07	4
Hand setting stem	06	5
Dial	04	6
Casing ring	03	7

**Analog Quartz 5 1/2" Slim Movement / Two Hands(H/M)**

**1. MOVEMENT DIMENSIONS**

Outside diameter	13.00mm(3-9H) × 15.55mm(12-6H)
Casing diameter	11.80mm(3-9H) × 15.15mm(12-6H)
Total height	2.19mm (including battery)

**2. TIME STANDARD**

Type of quartz oscillator	Tuning fork
Frequency of quartz oscillator	32,768 Hz
Accuracy	±20 seconds per month (on wrist)
Operating temperature range	−5°C to +50°C
Regulation device	Nil (Pre-adjusted)

**3. INDICATOR / FUNCTIONS**

2 Hands	Hour / Minute
Reset switch	
Setting mechanism	Crown at normal position : Free
	Crown pulled out 1st click : Time setting / Reset

**4. FEATURES**

Jewels	0 Jewels
Anti-magnetism	Over 1600A/m (Direct current magnetic field)
Maximum unbalance of hands	Hour hand : 0.13 μ N·m
	Minute hand : 0.15 μ N·m

**5. BATTERY**

Type / Size	Silver oxide battery / φ 5.8mm × t 1.65mm
Recommended battery	SR516SW (Maxell, Sony, Seizaiken)
Nominal voltage	1.55 V
Battery life	Approx. 3 years
Driving current consumption	Approx. 0.25 μ A
Operation stopping voltage	1.0 V

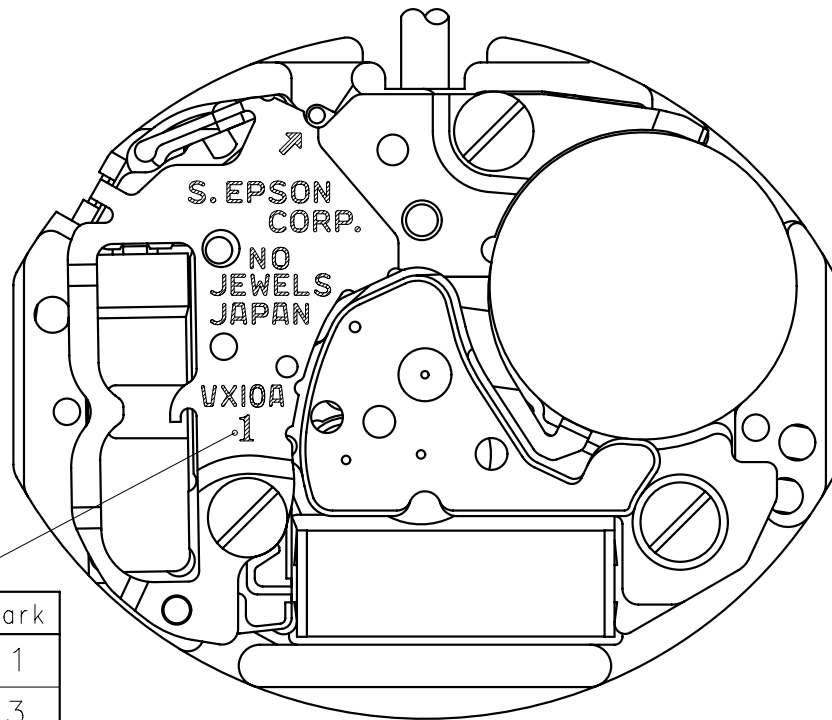
**6. SEPARATED PARTS (Parts code)**

Hour wheel	0271818(TypeS) or 0271634(TypeL)
Dial washer	0491735
Hand setting stem	0351819 or 0351818
Battery	SR516SW

**7. TEST OF ACCURACY**

Equipment to be used	SEIKO quartz tester QT-99, Greiner quartz timer-C , Witschi Q-tester 4000
Duration of measurement	10 seconds
Microphone to be used	Electromagnetic detection type

All specifications are subject to change without notice.

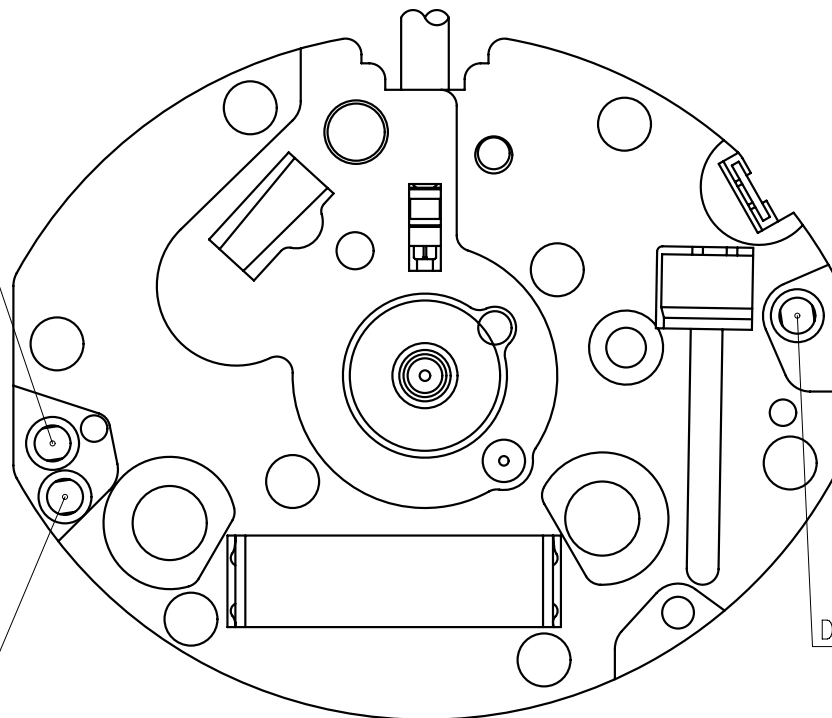


Hands type

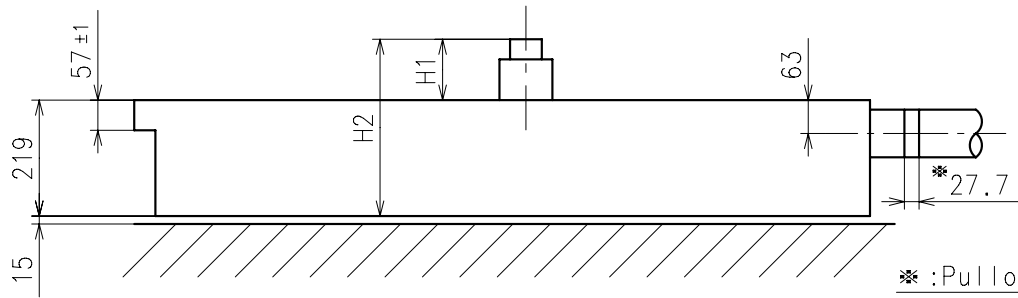
	Mark
Type S (1)	1
Type L (3)	3

Dial leg hole B  
(Main hole)

(Dial leg hole C)  
(Sub hole)

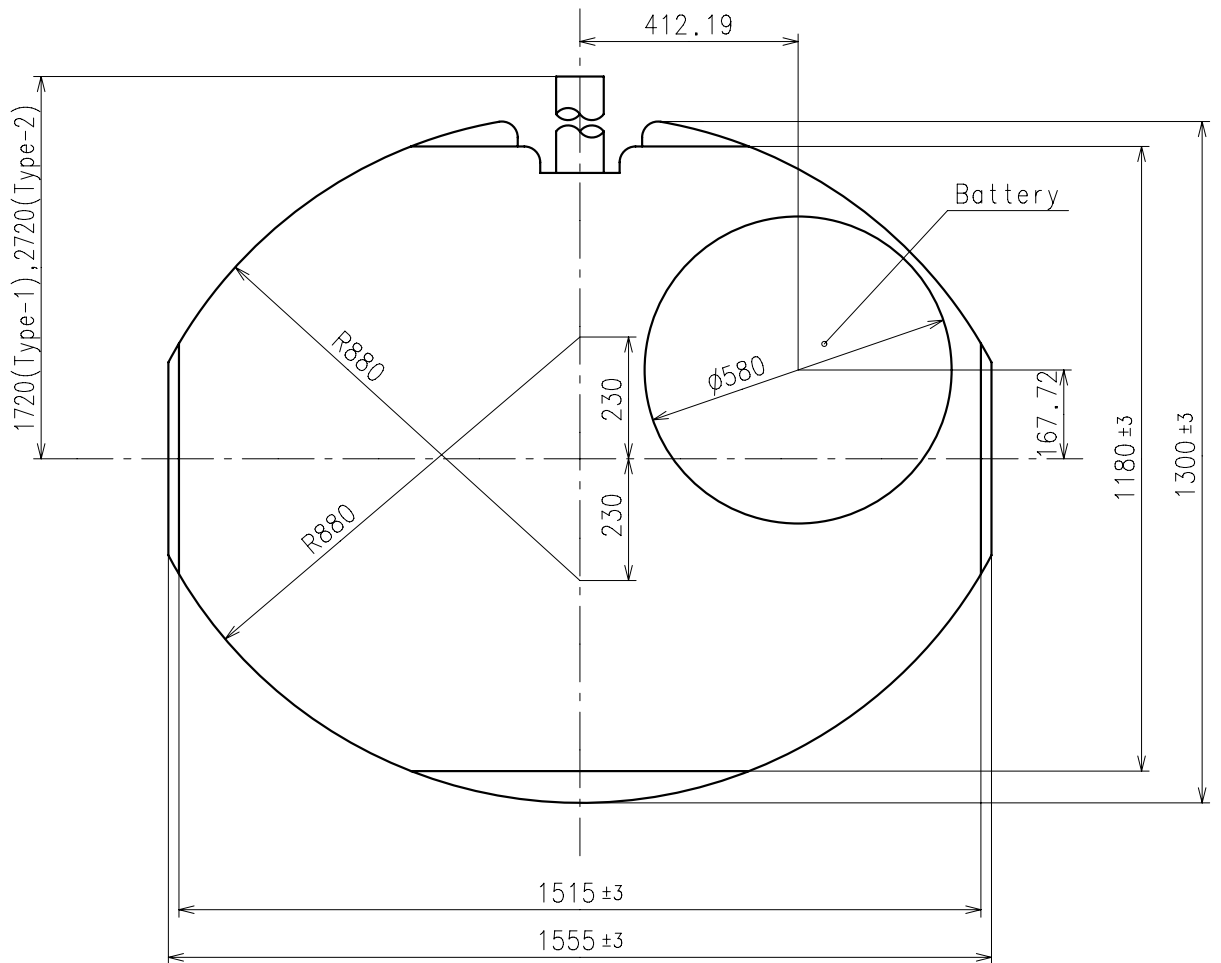


Dial leg hole A  
(Main hole)

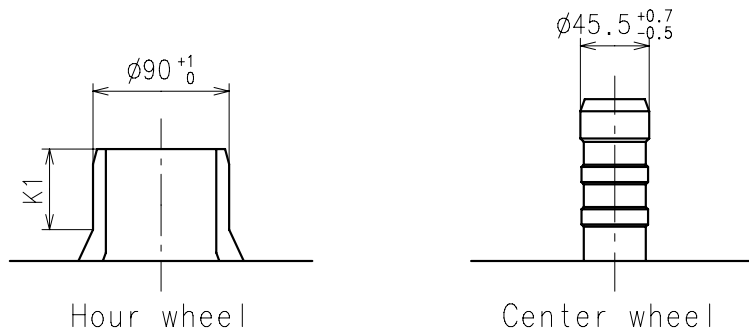


※:Pullout stroke

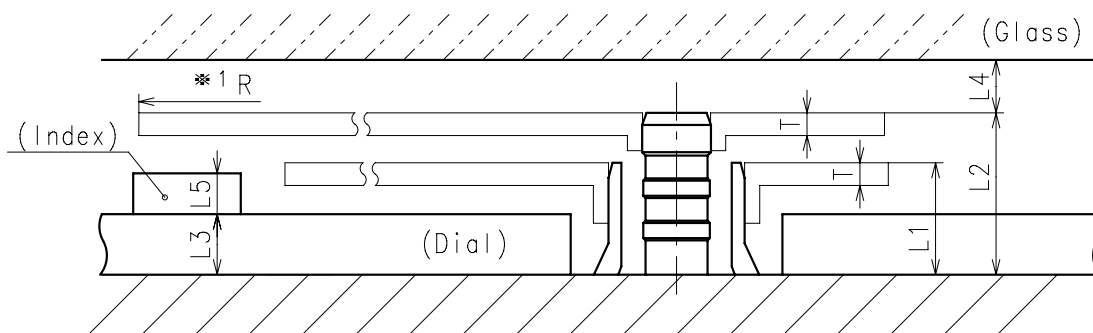
Center post		Type S (1) VX10A1	Type L (3) VX10A2
Maximum height from dial support	H1	112	160
Total height including movement	H2	331	379



- ※ Hour hand unbalance  $\leq 0.13\mu \text{ N} \cdot \text{m}$  ( $13\mu \text{ g} \cdot \text{m}$ )
- ※ Minute hand unbalance  $\leq 0.15\mu \text{ N} \cdot \text{m}$  ( $15\mu \text{ g} \cdot \text{m}$ )

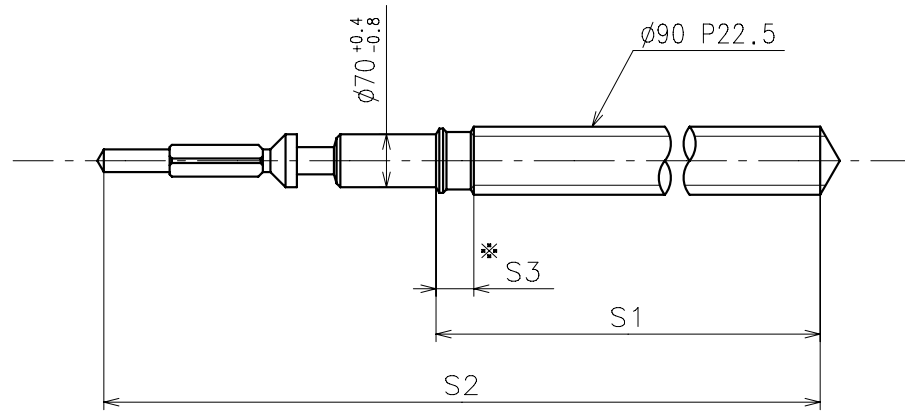


	Parts No.		Dimension
	Hour wheel	Center wheel	K1
Type S (1) VX10A1	0271818	0221814	53
Type L (3) VX10A2	0271634	0221597	49



	L1	L2	L3	L4	L5	T	*1 R
Type S (1) VX10A1	74	112	40	MIN: 35	MAX: 22	15	MAX: 750
Type L (3) VX10A2	122	160	90	MIN: 35	MAX: 22	15	MAX: 750

※ 1: It is the size taken into consideration for hands attachment.  
Please observe some standard value specified in unbalance when using long hands.

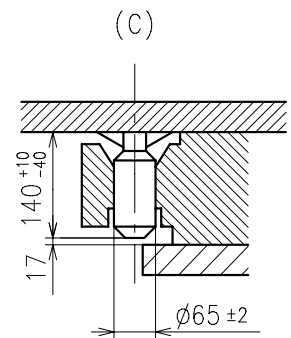
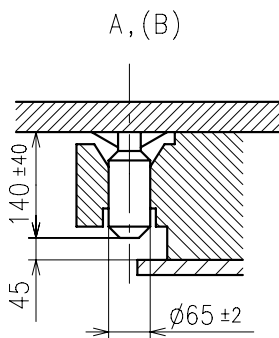
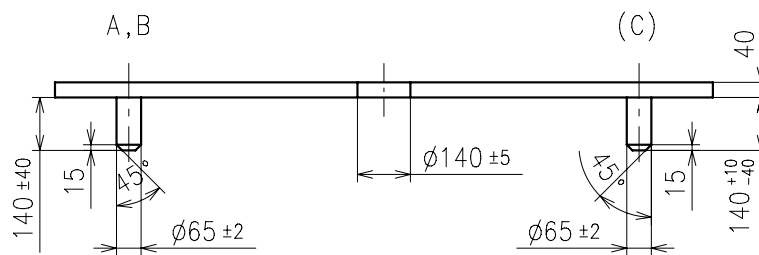
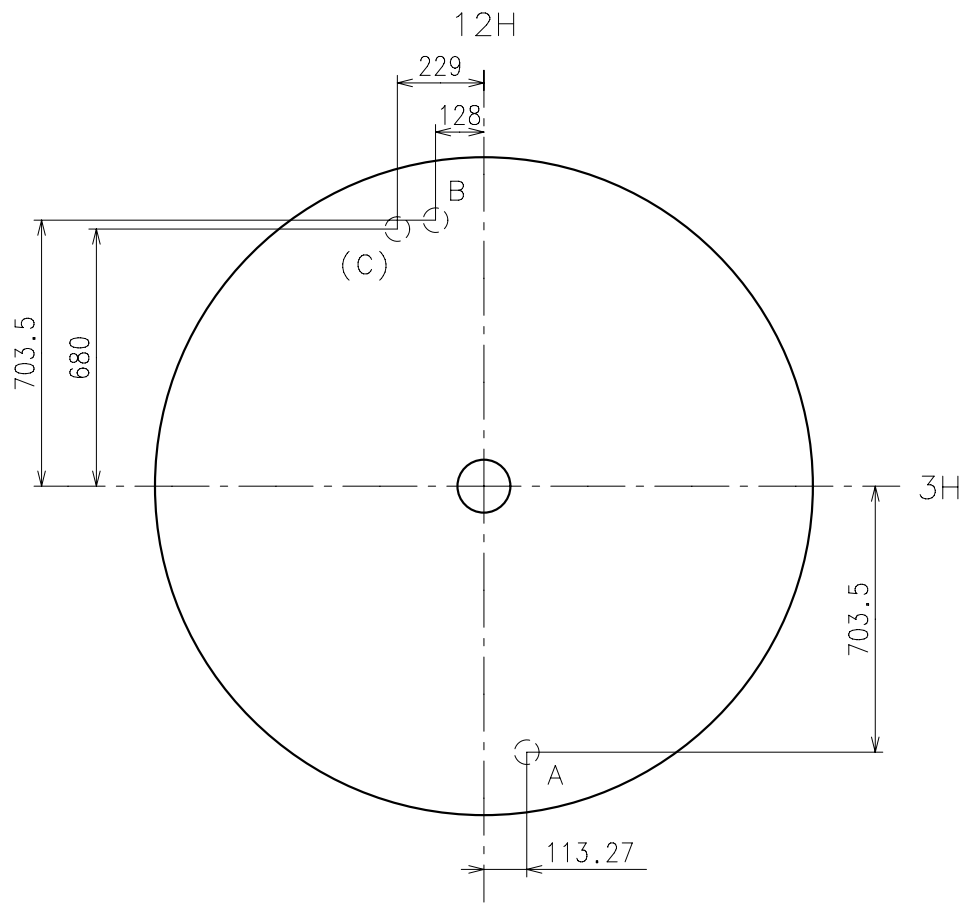


※ Not threaded

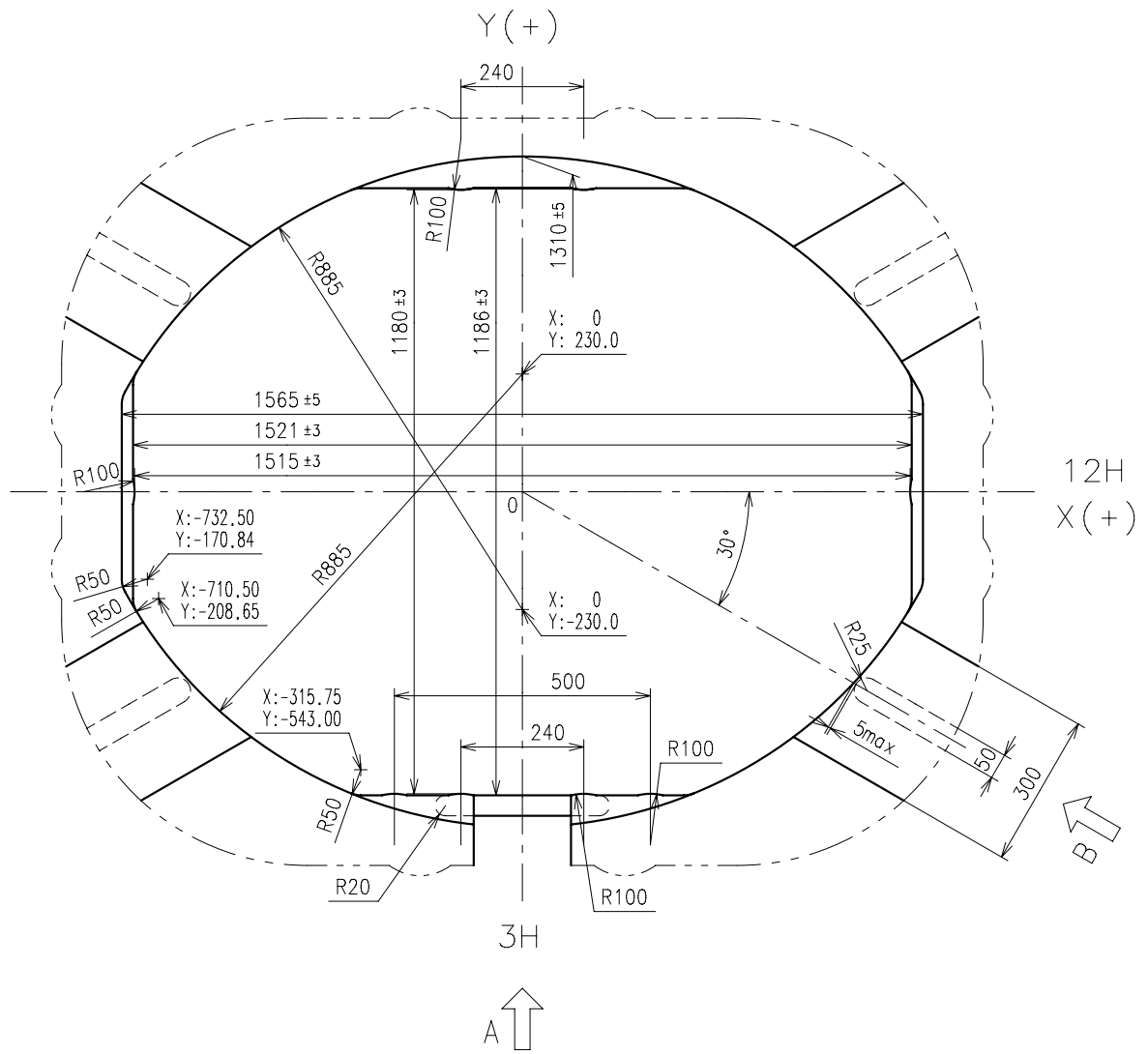
	Part No.	S1	S2	S3
Type-1 (Standard)	0351819	1148	1577	50
Type-2	0351818	2148	2577	1050

Material : Steel

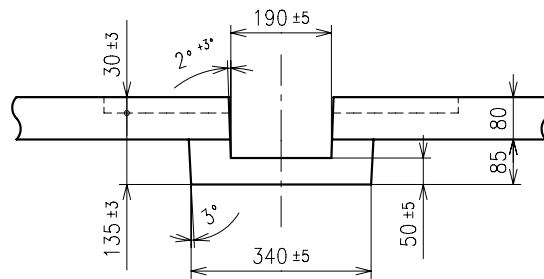
Hardness : Vickers 600±50



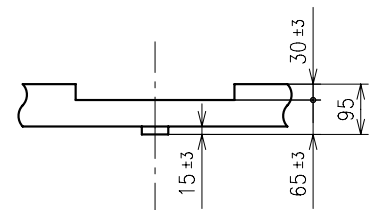
\* Use dial leg A-B or (A-C)



A view



B view



12H-6H section



3H section

