

Watch Movement Specification and Drawing

MINI & SLIM

Cal. VX01B

Movement Size

4 3/4'''

Casing Diameter

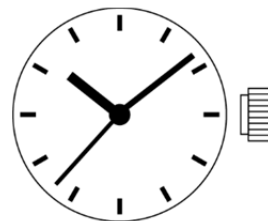
10.8 × 13.75 mm

Height

2.39mm

Battery Life

2 years



Date: 27/Feb./'15

Cal. VX01B

Items	Rev.	Page
Specifications	06	1
Appearance	02	2
Casing	04	3
Hand fitting	02	4
Hand setting stem	03	5
Dial	02	6
Casing ring	01	7

Analog Quartz 4 3/4" Slim Movement / Three Hands(H/M/S)

1. MOVEMENT DIMENSIONS

Outside diameter	10.80mm(3-9H) × 14.50mm(12-6H)
Casing diameter	10.80mm(3-9H) × 13.75mm(12-6H)
Total height	2.39mm(2.48mm including battery)

2. TIME STANDARD

Type of quartz oscillator	Tuning fork
Frequency of quartz oscillator	32,768 Hz
Accuracy	±20 seconds per month (on wrist)
Operating temperature range	−5°C to +50°C
Regulation device	Nil (Pre-adjusted)

3. INDICATOR / FUNCTIONS

3 Hands	Hour / Minute / Second				
Power depletion warning function(BLD)					
(Second hand moves at 2-second intervals)					
Reset switch					
Setting mechanism	<table style="width: 100%; border-collapse: collapse;"> <tr> <td style="width: 60%;">Crown at normal position</td> <td>: Free</td> </tr> <tr> <td>Crown pulled out 1st click</td> <td>: Time setting / Reset</td> </tr> </table>	Crown at normal position	: Free	Crown pulled out 1st click	: Time setting / Reset
Crown at normal position	: Free				
Crown pulled out 1st click	: Time setting / Reset				

4. FEATURES

Jewels	0 Jewels						
Anti-magnetism	Over 1600A/m (Direct current magnetic field)						
Maximum unbalance of hands	<table style="width: 100%; border-collapse: collapse;"> <tr> <td style="width: 60%;">Hour hand</td> <td>: 0.13 μ N·m</td> </tr> <tr> <td>Minute hand</td> <td>: 0.15 μ N·m</td> </tr> <tr> <td>Second hand</td> <td>: 0.05 μ N·m</td> </tr> </table>	Hour hand	: 0.13 μ N·m	Minute hand	: 0.15 μ N·m	Second hand	: 0.05 μ N·m
Hour hand	: 0.13 μ N·m						
Minute hand	: 0.15 μ N·m						
Second hand	: 0.05 μ N·m						

5. BATTERY

Type / Size	Silver oxide battery / φ 5.8mm × t 2.15mm
Recommended battery	SR521SW (Maxell, Sony, Seizaiken)
Nominal voltage	1.55 V
Battery life	Approx. 2 years
Driving current consumption	Approx. 0.8 μ A
Operation stopping voltage	1.0 V

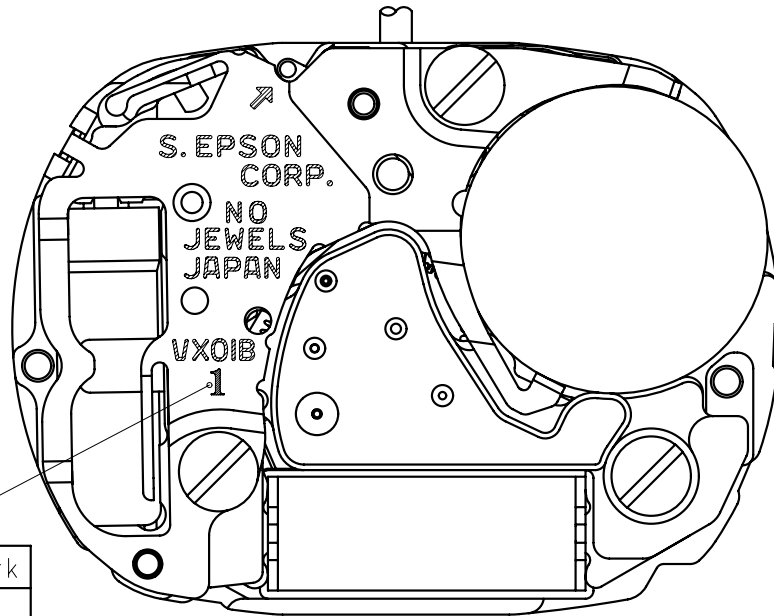
6. SEPARATED PARTS (Parts code)

Hour wheel	0271803(Type S) or 0271808(Type L)
Dial washer	0491735
Hand setting stem	0351807 or 0351808 or 0351819 or 0351818
Battery	SR521SW

7. TEST OF ACCURACY

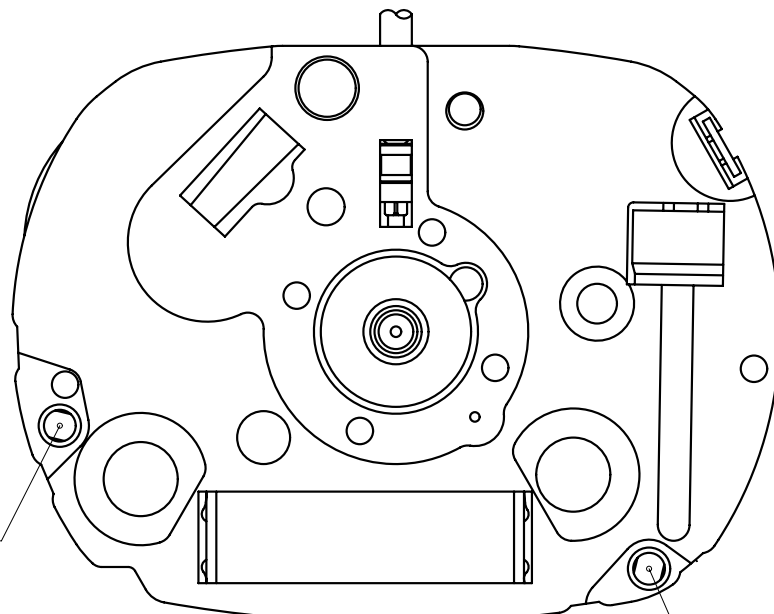
Equipment to be used	SEIKO quartz tester QT-99, Greiner quartz timer-C , Witschi Q-tester 4000
Duration of measurement	10 seconds
Microphone to be used	Electromagnetic detection type

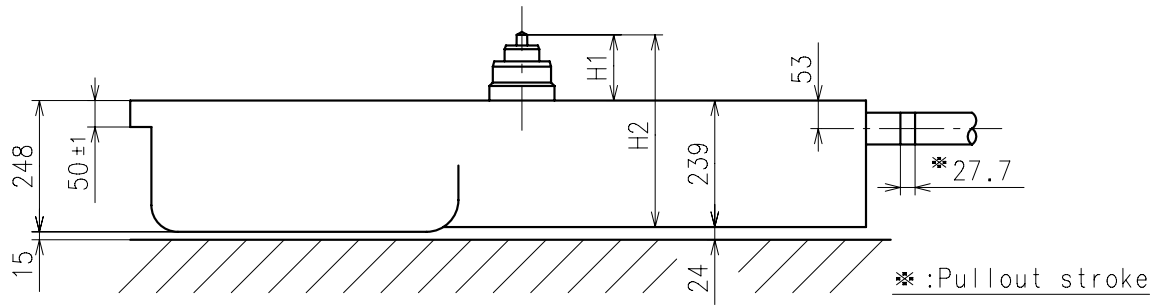
All specifications are subject to change without notice.



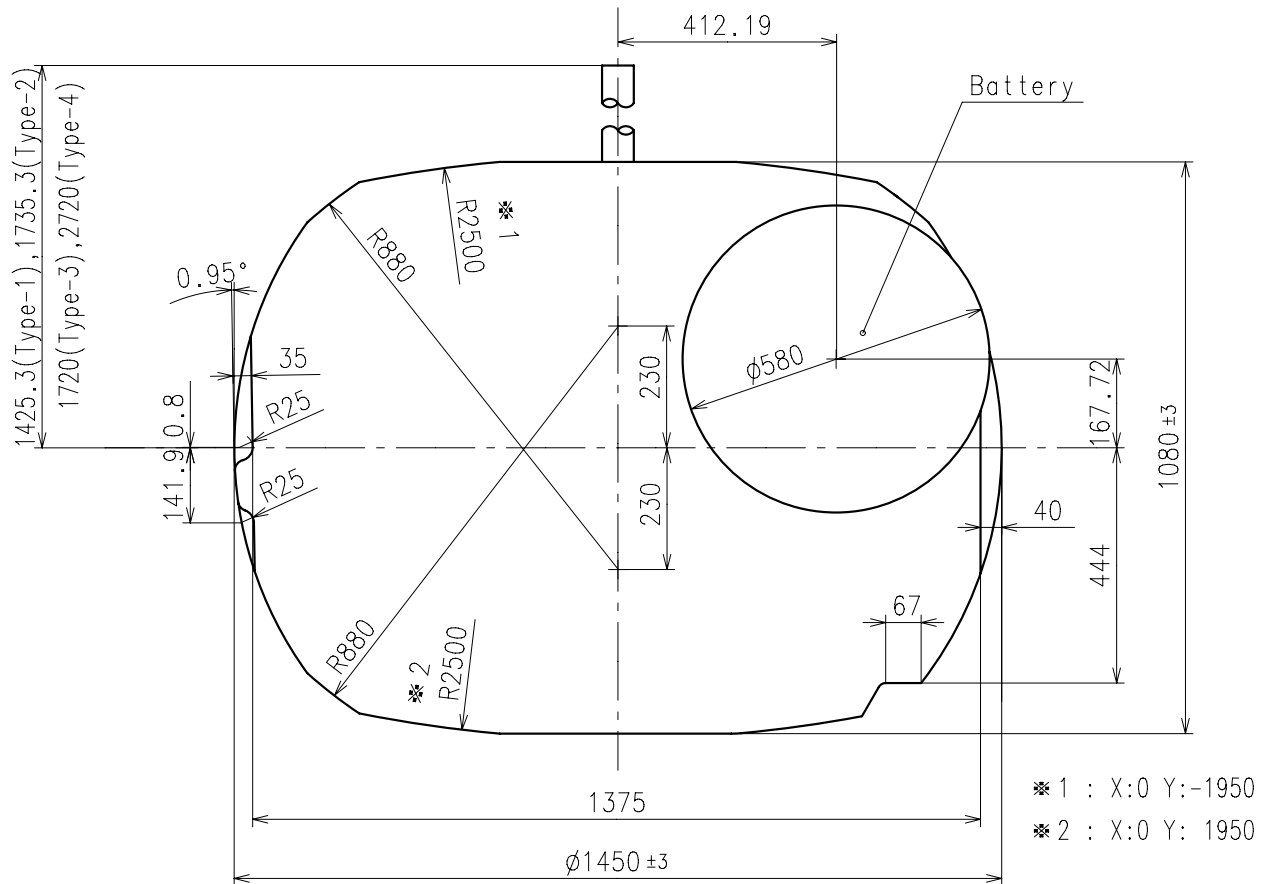
Hands type

	Mark
Type S (1)	1
Type L (3)	3

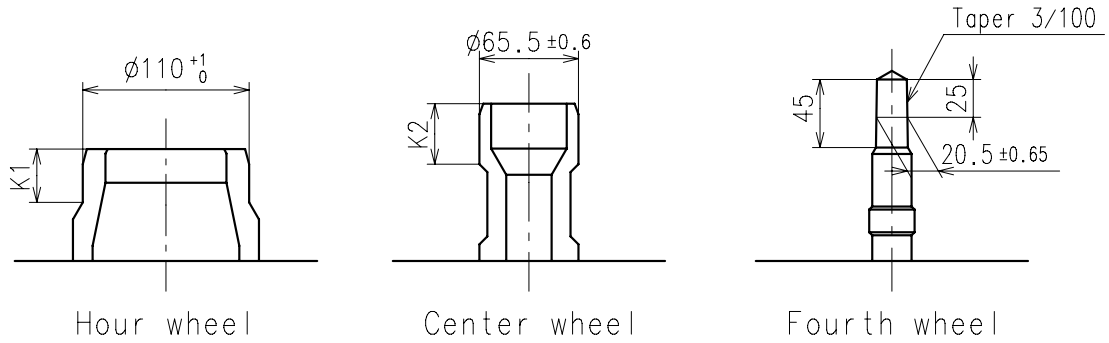




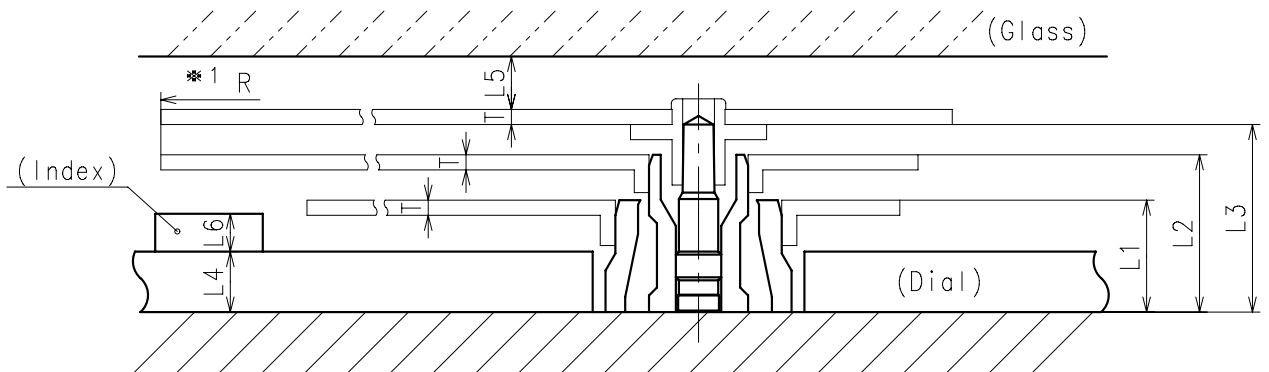
Center post		Type S (1) VX01B1	Type L (3) VX01B2
Maximum height from dial support	H1	124	170
Total height including movement	H2	363	409



- ※ Hour hand unbalance $\leq 0.13\mu \text{ N} \cdot \text{m}$ ($13\mu \text{ g} \cdot \text{m}$)
- ※ Minute hand unbalance $\leq 0.15\mu \text{ N} \cdot \text{m}$ ($15\mu \text{ g} \cdot \text{m}$)
- ※ Second hand unbalance $\leq 0.05\mu \text{ N} \cdot \text{m}$ ($5\mu \text{ g} \cdot \text{m}$)

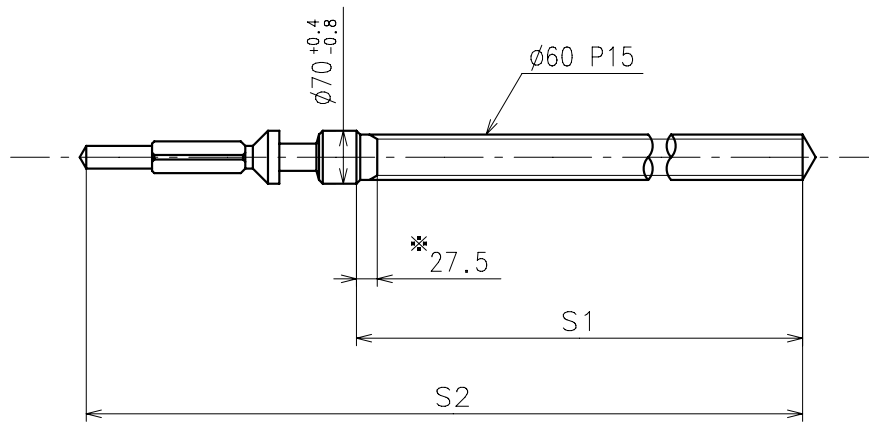


	Parts No.			Dimension	
	Hour wheel	Center wheel	Fourth wheel	K1	K2
Type S (1) VX01B1	0271803	0221809	0241509	40	40
Type L (3) VX01B2	0271808	0221808	0241515	104	40



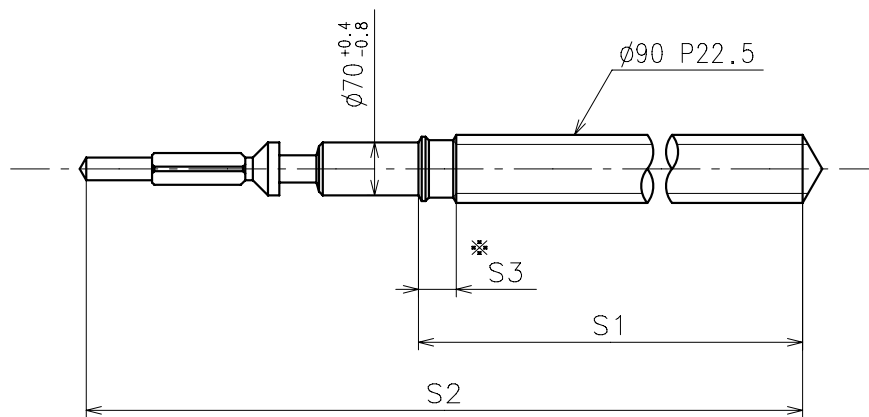
	L1	L2	L3	L4	L5	L6	T	*1 R
Type S (1) VX01B1	74	104	124	40	MIN: 40	MAX: 22	10	MAX: 750
Type L (3) VX01B2	120	150	170	90	MIN: 40	MAX: 22	10	MAX: 750

※1:It is the size taken into consideration for hands attachment.
Please observe some standard value specified in unbalance when using long hands.



※ Not threaded

	Part No.	S1	S2
Type-1 (Standard)	0351807	935	1292.3
Type-2	0351808	1245	1602.3



※ Not threaded

	Part No.	S1	S2	S3
Type-3	0351819	1148	1577	50
Type-4	0351818	2148	2577	1050

Material : Steel
Hardness : Vickers 600±50

