

Cal. VD56C

ϕ 29.50 mm

H 3.97 mm

Item	Version No.
Specification - 1	Version 2
Specification - 2	Version 1
Appearance	Version 1
Casing	Version 1
Hand Fitting	Version 2
Hand Setting Stem	Version 1
Dial - 1	Version 1
Assembly Plan - 1	Version 1
Assembly Plan - 2	Version 1
Hands	Version 1



MOVEMENT SPECIFICATION - 1

CAL.VD56C 12 3 / 4 Ligne Quartz Movement

Three Hands with 4 Eyes (Minute, Second, 1 / 10 Second Chronograph & 24H Indicator)

1. MOVEMENT DIMENSIONS

- Outside diameter ϕ 29.50mm (12H~6H) x 26.00mm (3H~9H)
- Casing diameter ϕ 28.80mm (12H~6H)
- Total height 3.97 mm
- Dimensions of small hands away from center 7.50 mm

2. TIME STANDARD

- Type of quartz oscillator Tuning fork
- Frequency of quartz oscillator 32,768 H Z
- Accuracy Monthly rate: Less than 20 seconds per month at normal temperature range
- Regulation device Nil
- Regulation hands unbalance
 - Second : Less than 0.09 μ N·m (9mg·mm)
 - Minute : Less than 0.90 μ N·m (90mg·mm)
 - Hour : Less than 0.60 μ N·m (60mg·mm)
 - Chronograph hands : Less than 0.05 μ N·m (5mg·mm)
 - 24 hour indicator : Less than 0.07 μ N·m (7mg·mm)
- Additional function
 - Stopwatch : up to 1 minute in 1/10 second up to (2 seconds per round)
 - 60 minutes in 1 second split time
 - 24 hour indicator (synchronized regular hour-hand)

3. BATTERY

- Type Silver oxide battery
- Nominal voltage 1.55 V
- Size ϕ 9.5 x t 2.0 (mm)
- Battery life Approx. 3 years
- Recommended battery SR920SW (SEIZAIKEN)

4. DIAL FIXED METHOD

The dial is fixed by two dial leg holes of the main plate

5. JEWEL

0 jewel

6. ANTIMAGNETISM

(direct current magnetic field)

\geq 1600 A / m

7. SHOCK RESISTANCE

On equal level with general quartz movement

8. OPERATING TEMPERATURE RANGE

From - 5 °C to + 50 °C

9. TEST OF ACCURACY

- Equipment to be used
 - SEIKO Quartz Tester QT - 99
 - Greiner Quartz Timer - C
 - Witschi Q-Tester 4000
- Duration of measurement 10 seconds
- Microphone to be used Electromagnetic detection type

*** All specifications are subject to change without notice.**

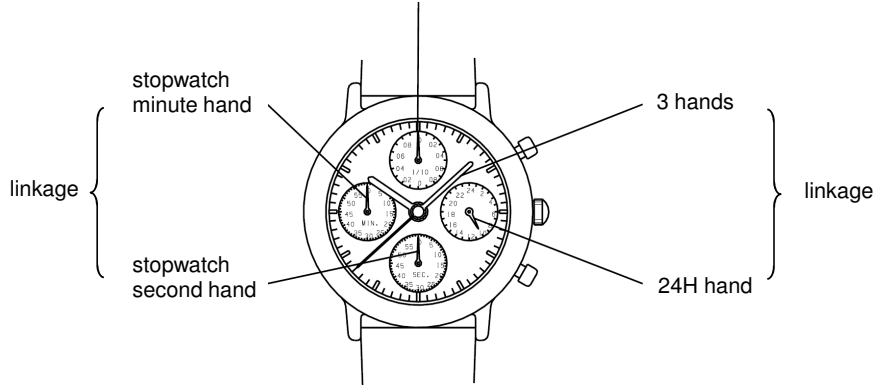
Movement Specification - 2

CAL. VD56C

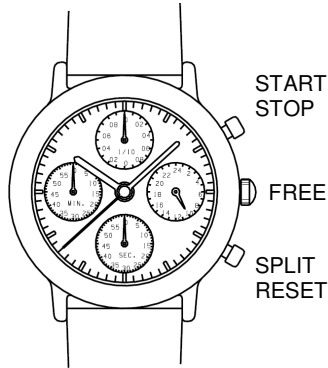
OPERATION

3 step motors (3 hands, 1 / 10 sec. chrono. maximum to 60 minutes)

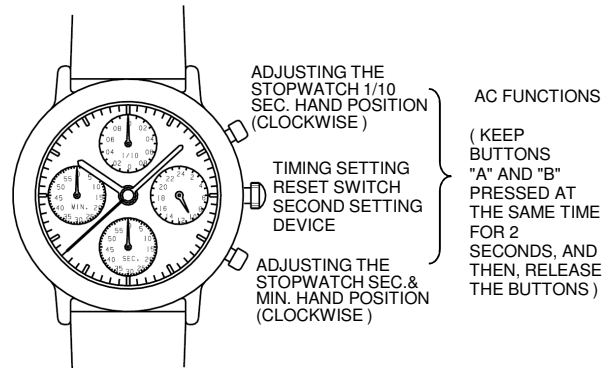
Chronograph 1/10 second hand
(This chronograph hand moves for the first minute which indicates the measurement time in 1/10 unit)



Normal position

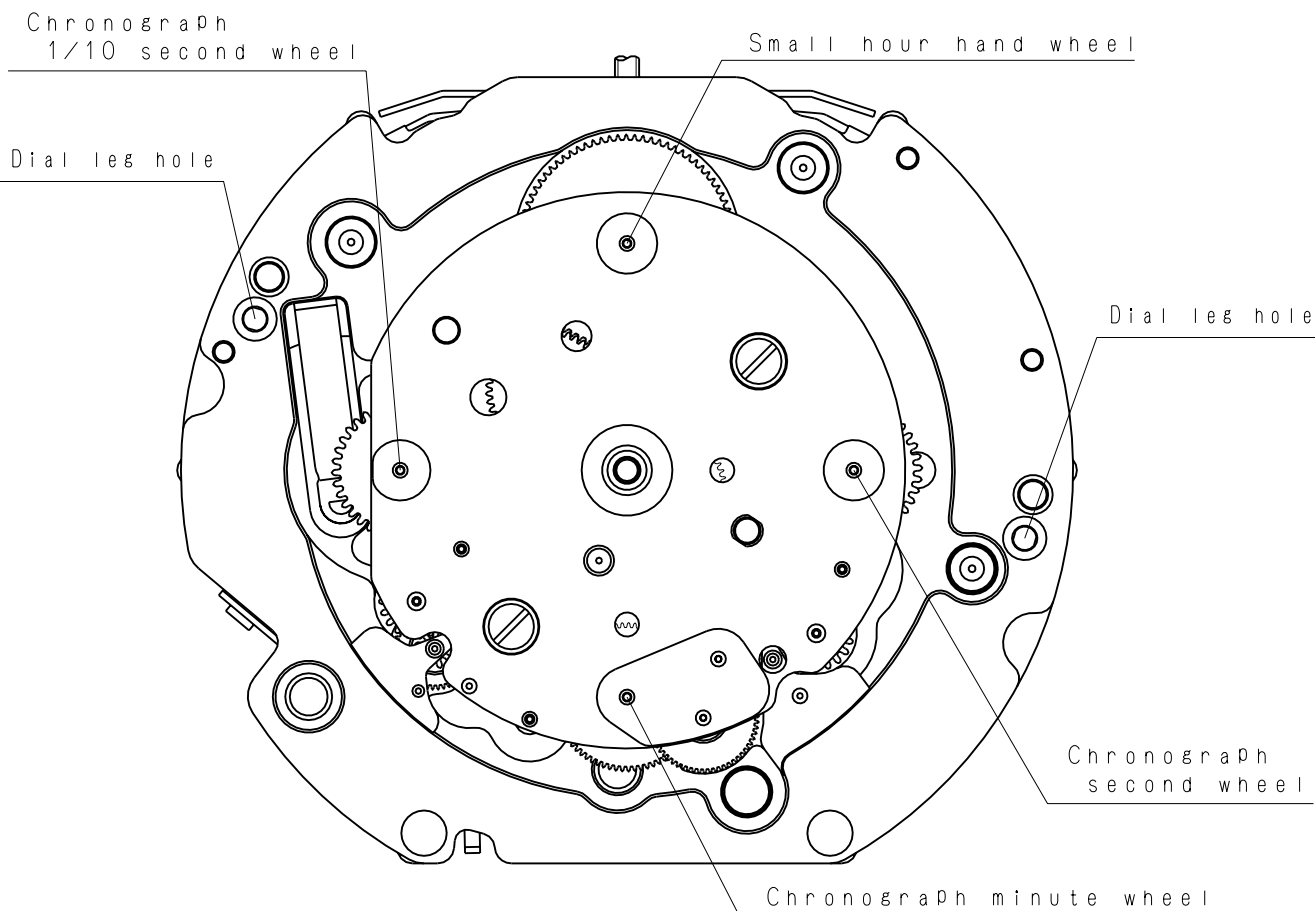
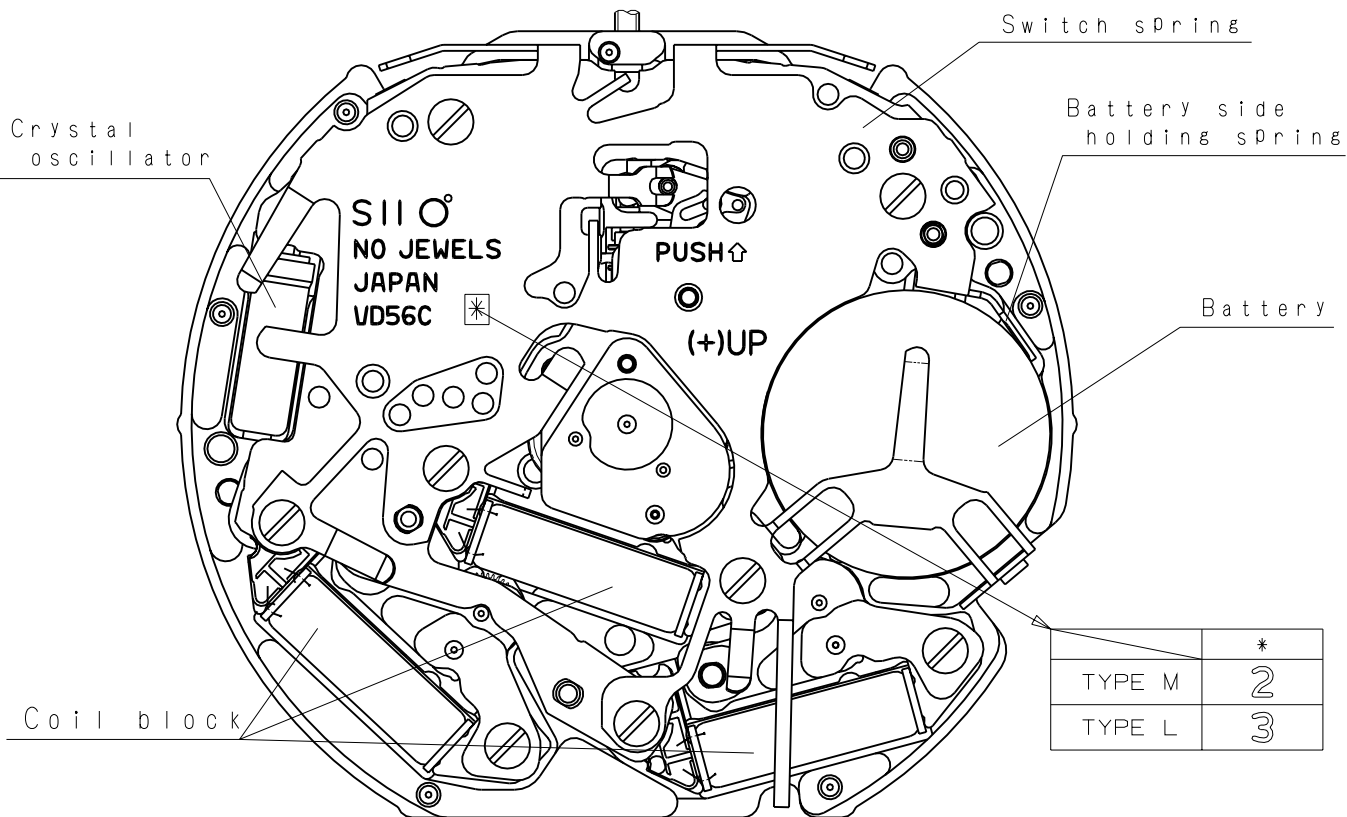


1st click
adjusting minute, hour & chrono. hands



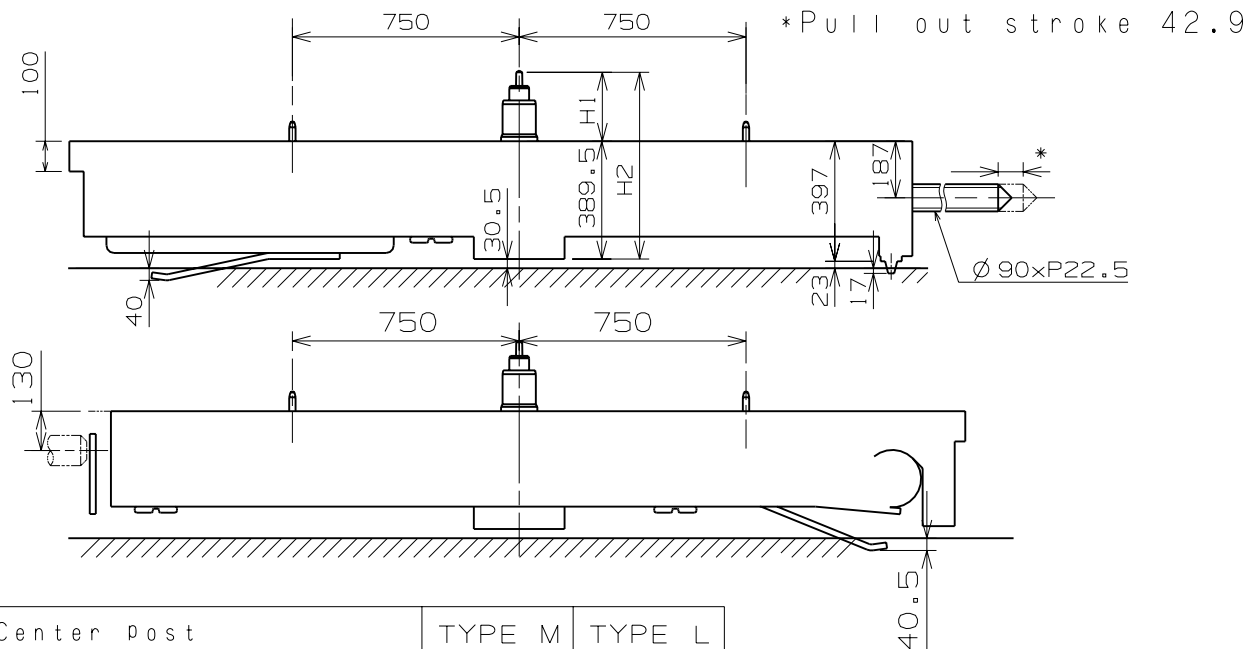
- * Stopwatch 1/10 second hand moves 2 seconds for 1 circle
- * Pull the crown to 2nd click to adjust the stopwatch hand position.
- * AC functions is available if stopwatch hand position is disorderly.
- * When using AC functions, stopwatch hand moves back and returned to where it was (second hand moves 1/2 circle counterclockwise and 1/2 circle clockwise, 1/10 second hand moves 1 circle clockwise)

Version 1

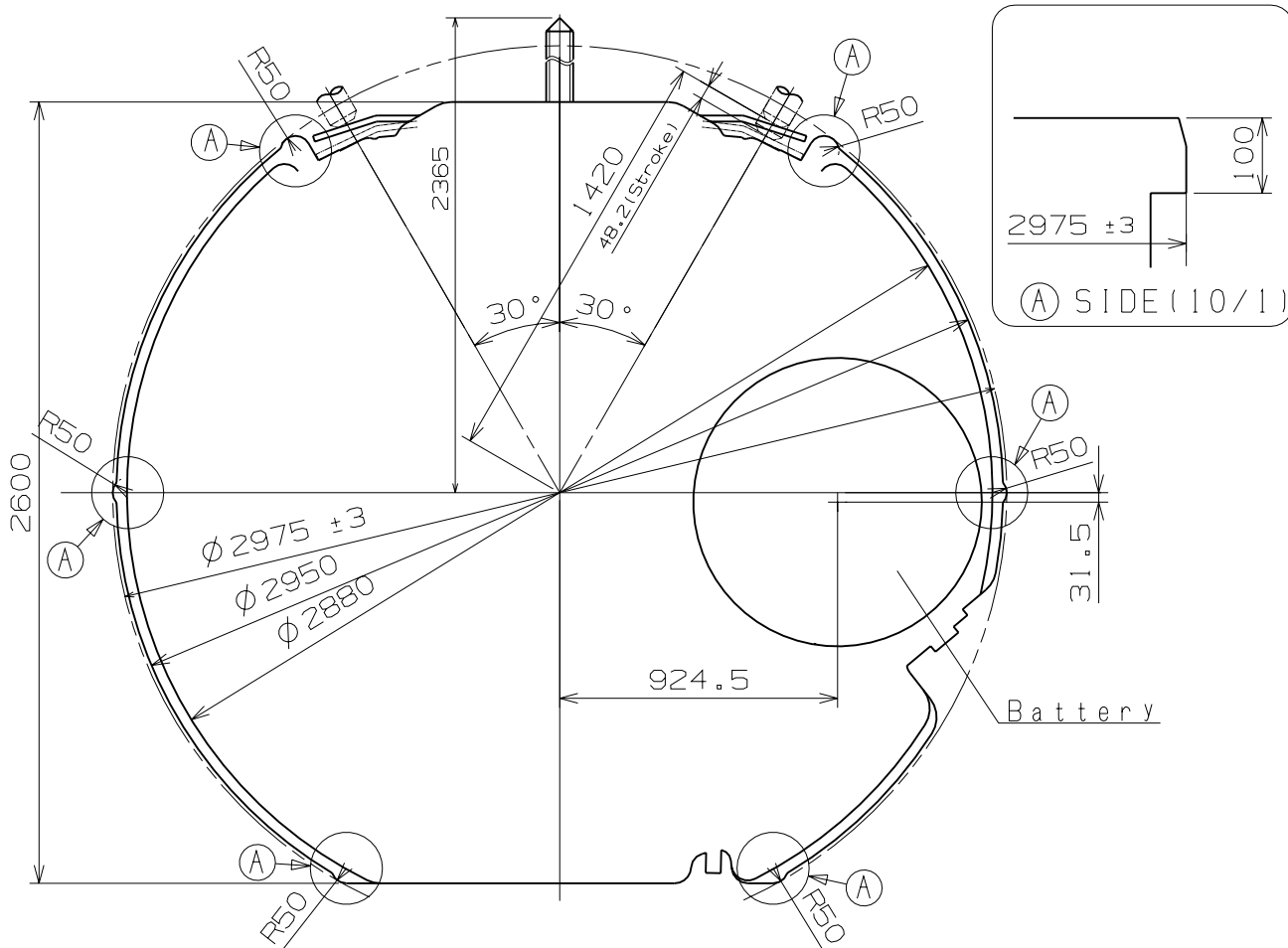


Scale : 4/1
Unit : 1=1/100mm

Version:1

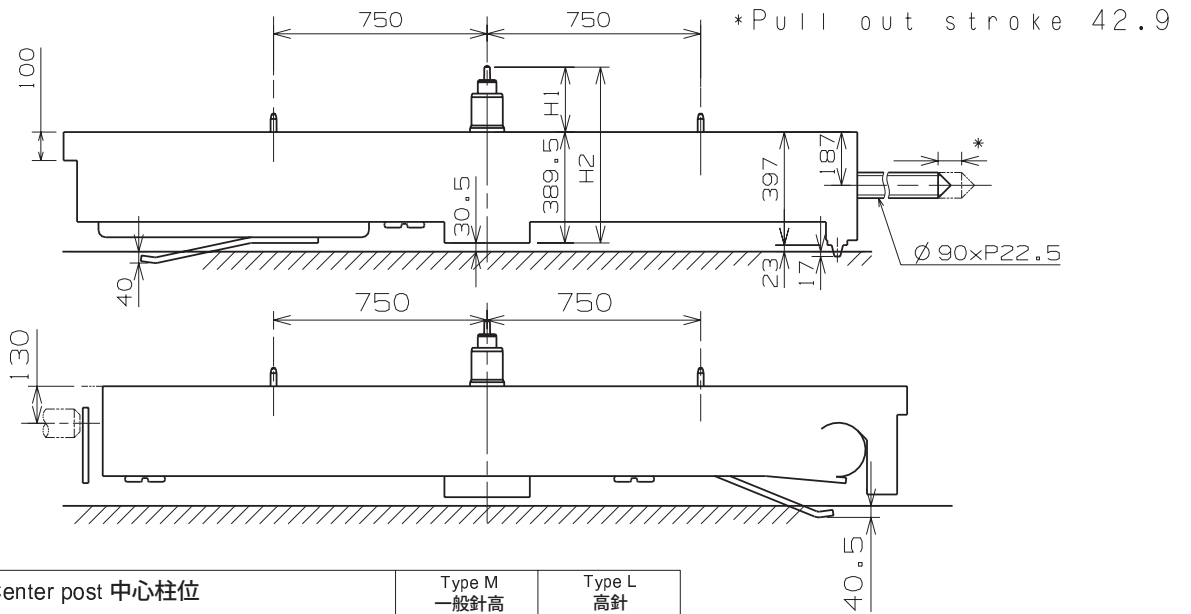


Center Post		TYPE M	TYPE L
Maximum height from main plate surface	H1	228	273
Total height incl. movement	H2	617.5	662.5

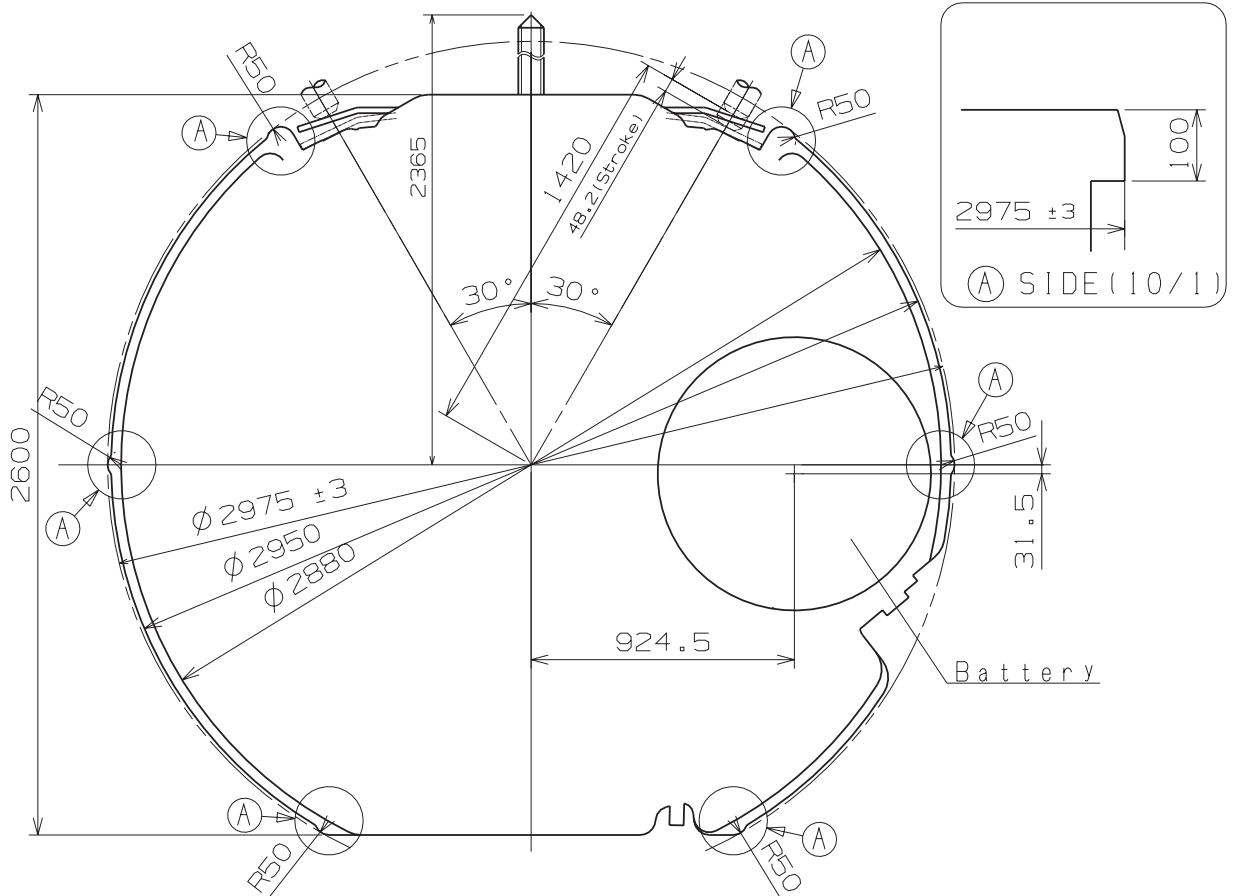


Scale : 4/1
Unit : 1=1/100mm

Version:1



Center post 中心柱位		Type M 一般針高	Type L 高針
Maximum height from main plate surface 與機芯平面之最大高度	H1	228	273
Total height incl. movement 機芯總高度	H2	617.5	662.5



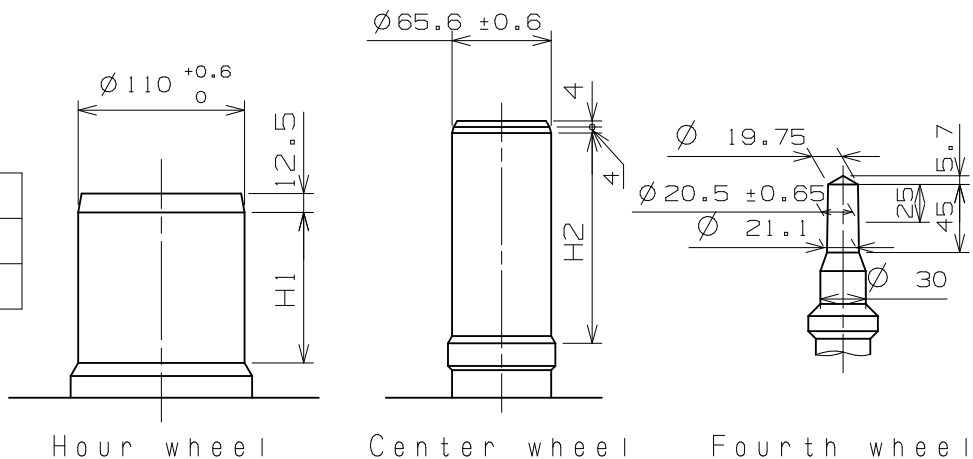
Scale : 4/1

Unit : 1=1/100mm

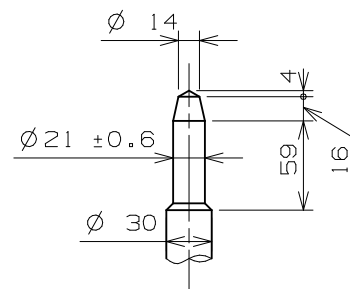
Version:1

- * Hour hand unbalance $\leq 0.6 \mu\text{N}\cdot\text{m}$ (60mg·mm)
- * Minute hand unbalance $\leq 0.9 \mu\text{N}\cdot\text{m}$ (90mg·mm)
- * Second hand unbalance $\leq 0.09 \mu\text{N}\cdot\text{m}$ (9mg·mm)
- * Chronograph hand unbalance $\leq 0.05 \mu\text{N}\cdot\text{m}$ (5mg·mm)
- * Small Hour hand unbalance $\leq 0.07 \mu\text{N}\cdot\text{m}$ (7mg·mm)

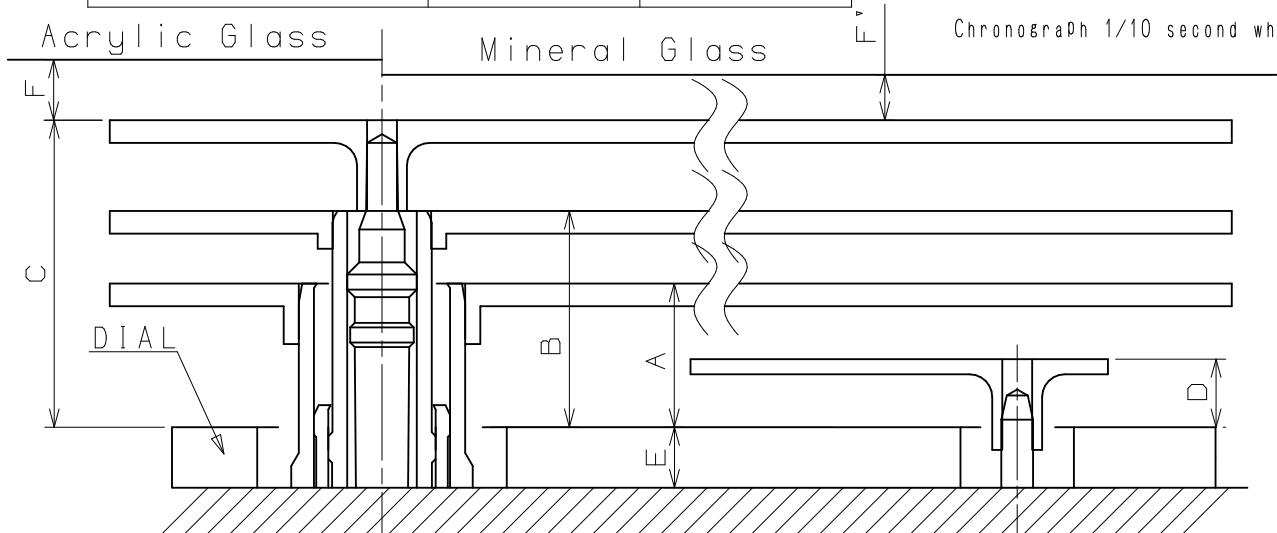
	H1	H2
TYPE M	99.5	141
TYPE L	144.5	186



Part name	Part No.	
	TYPE M	TYPE L
Hour wheel	0271 4060	0273 0360
Center wheel	0221 2050	0221 2040
Fourth wheel	0241 1770	0241 4800
Small hour hand wheel	0157 0110	0157 0350
Chronograph minute wheel	0902 0070	0902 0030
Chronograph second wheel	0888 0080	0888 0100
Chronograph 1/10 second wheel	0888 0080	0888 0100



Small hour hand wheel
 Chronograph minute wheel
 Chronograph second wheel
 Chronograph 1/10 second wheel



	A	B	C	D	E	F	F'
TYPE M	95	143	203	45	40	50	40
TYPE L	95	143	203	45	85	50	40

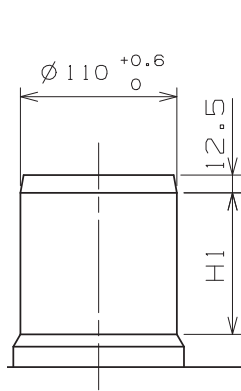
Scale : 20/1

Unit : 1=1/100mm

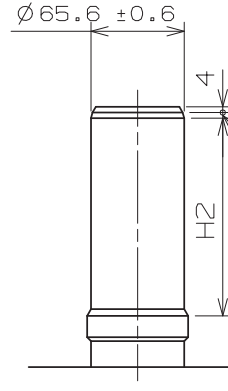
Version:2

- * Hour hand unbalance $\leq 0.6 \mu\text{N}\cdot\text{m}$ (60mg·mm)
- * Minute hand unbalance $\leq 0.9 \mu\text{N}\cdot\text{m}$ (90mg·mm)
- * Second hand unbalance $\leq 0.09 \mu\text{N}\cdot\text{m}$ (9mg·mm)
- * Chronograph hand unbalance $\leq 0.05 \mu\text{N}\cdot\text{m}$ (5mg·mm)
- * Small Hour hand unbalance $\leq 0.07 \mu\text{N}\cdot\text{m}$ (7mg·mm)

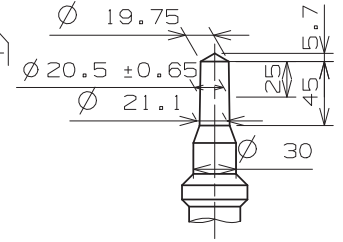
	H1	H2
Type M 一般針高	99.5	141
Type L 高針	144.5	186



Hour wheel



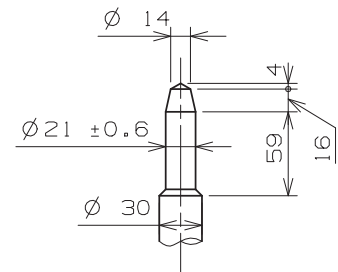
Center wheel



Fourth wheel

Dual 24 hour wheel
兩地時間24小時針輪

Part name	Part No.	
	Type M 一般針高	Type L 高針
Hour wheel 時針輪	0271 4060	0273 0360
Center wheel 分針輪	0221 2050	0221 2040
Fourth wheel 秒針輪	0241 1770	0241 4800
Small hour hand wheel 小時針輪	0157 0110	0157 0350
Chronograph minute wheel 計時分針輪	0902 0070	0902 0030
Chronograph second wheel 計時秒針輪	0888 0080	0888 0100
Chronograph 1/10 second wheel 1/10計時秒針輪	0888 0080	0888 0100



Small hour hand wheel
Chronograph minute wheel
Chronograph second wheel
Chronograph 1/10 second wheel

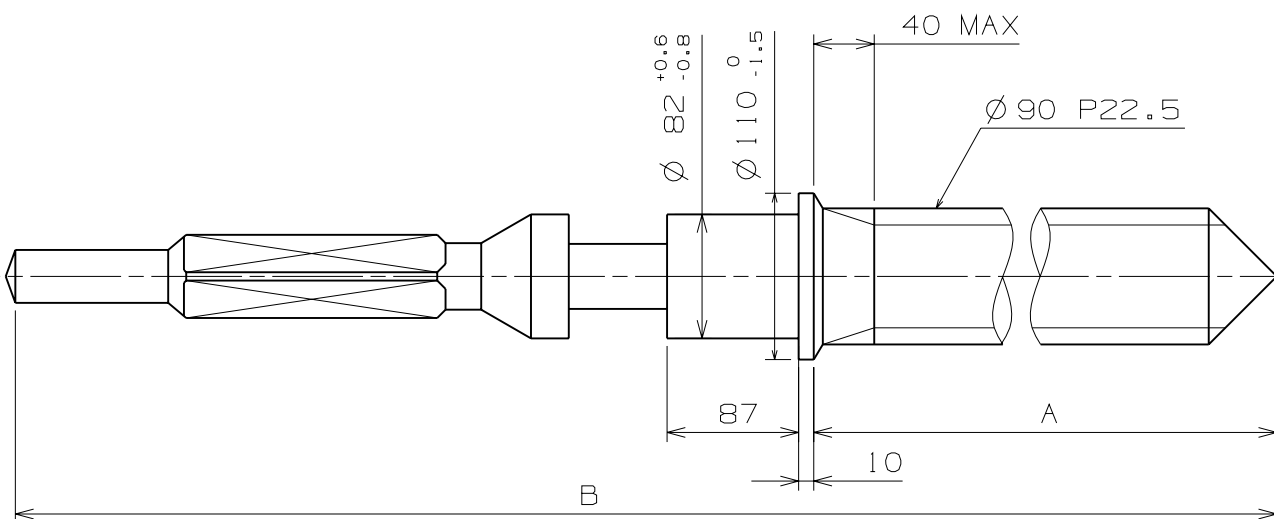


	A	B	C	D	E	F	F'
Type M 一般針高	95	143	203	45	40	50	40
Type L 高針	95	143	203	45	85	50	40

Scale : 20/1

Unit : 1=1/100mm

Version : 2

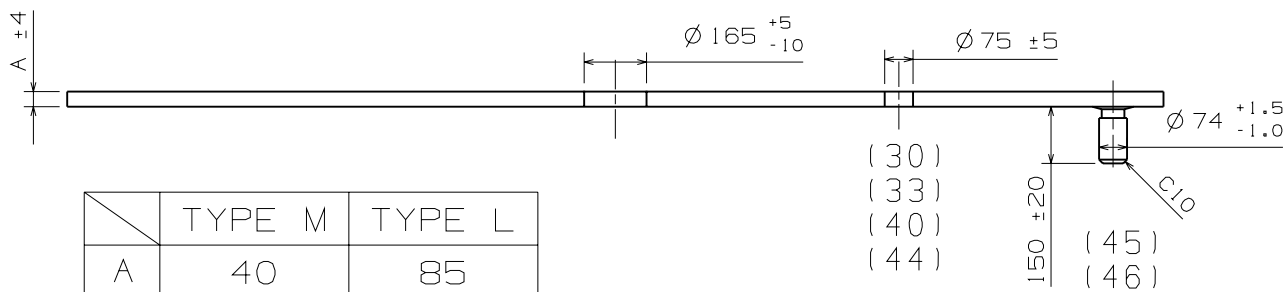
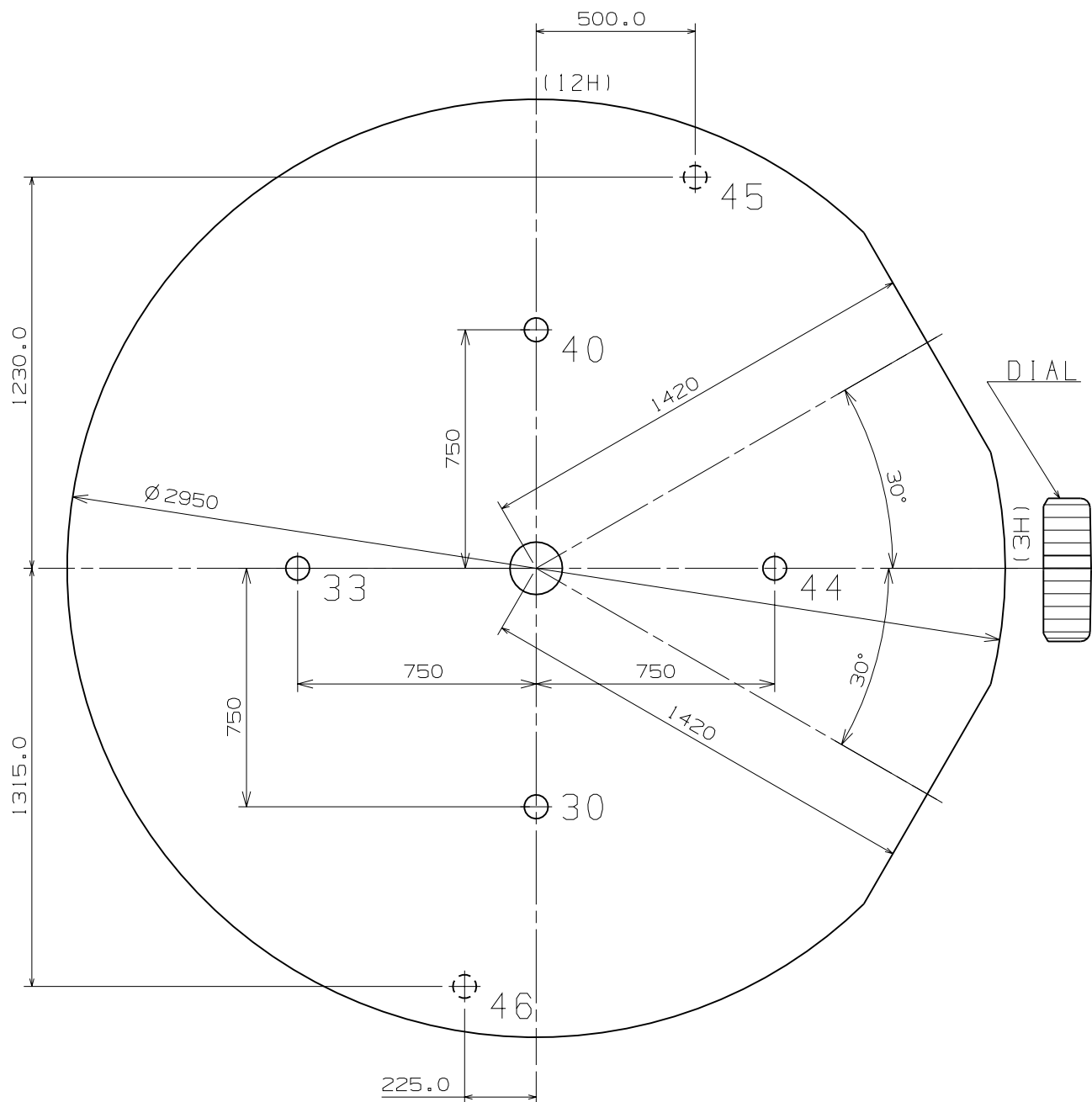


	Part. No.	A	B
TYPE A	0351 1780	1508	2036

Scale : 20/1

Unit : 1=1/100mm

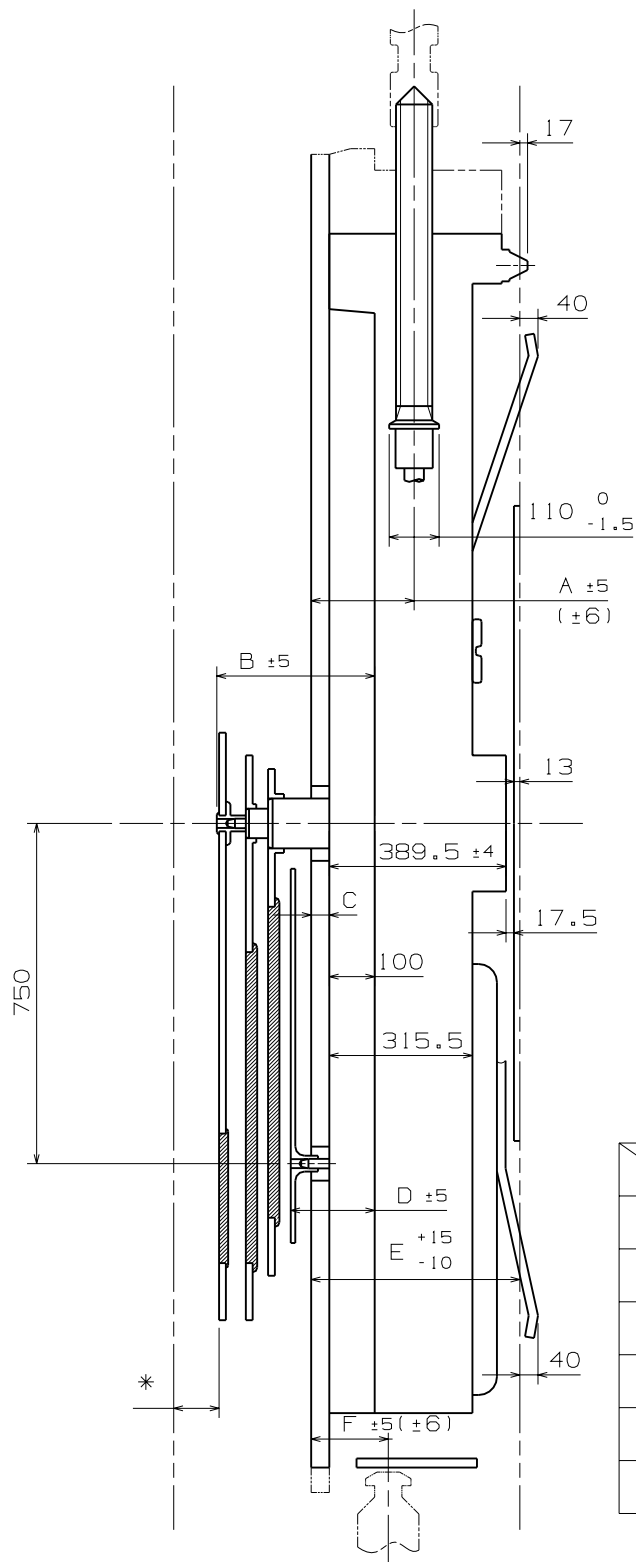
Version:1



	TYPE M	TYPE L
A	40	85

Scale : 5/1
Unit : 1=1/100mm

Version : 1

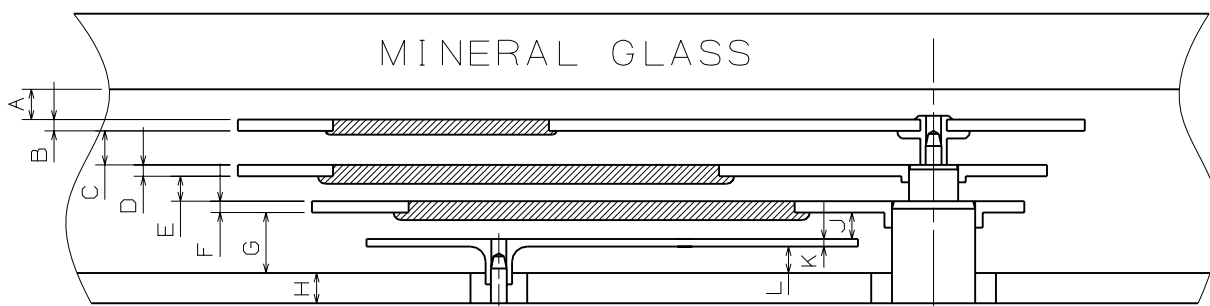
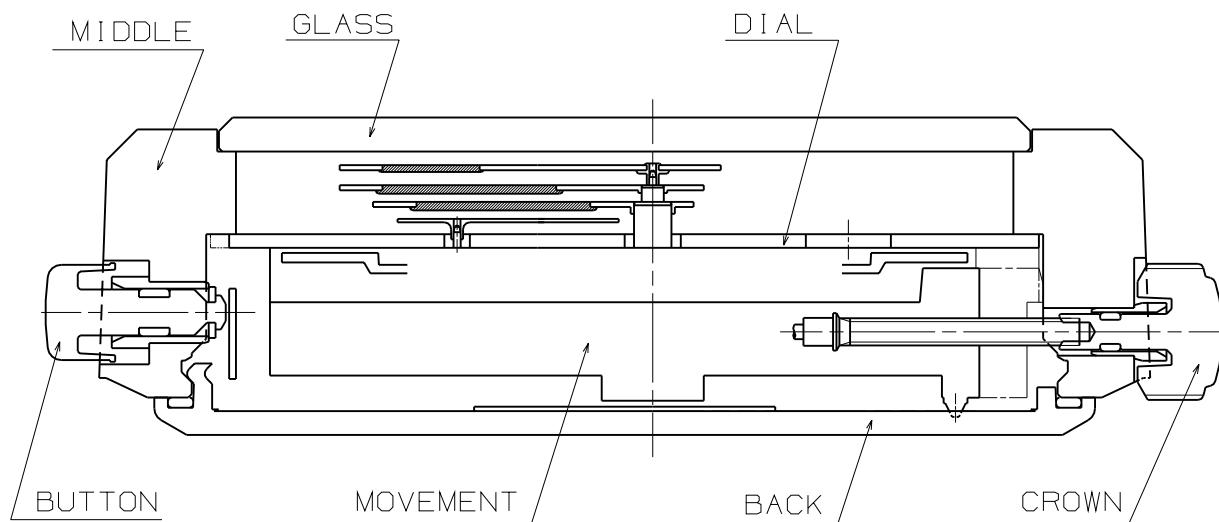


	TYPE M	TYPE L
A	227	272
B	343	388
C	40	85
D	185	230
E	460	505
F	170	215

*Acrylic Glass 50
*Mineral Glass 40

Scale : \neq
Unit : 1=1/100mm

Version : 1

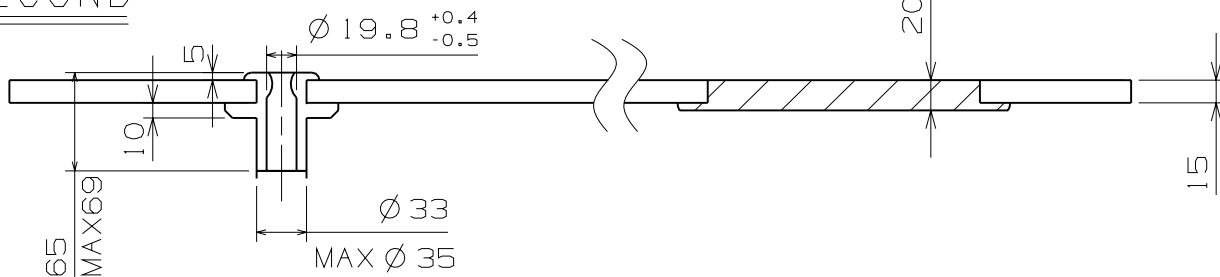


	TYPE M	TYPE L
A	40	40
B	15	15
C	45	45
D	15	15
E	33	33
F	15	15
G	80	80
H	40	85
J	35	35
K	10	10
L	35	35

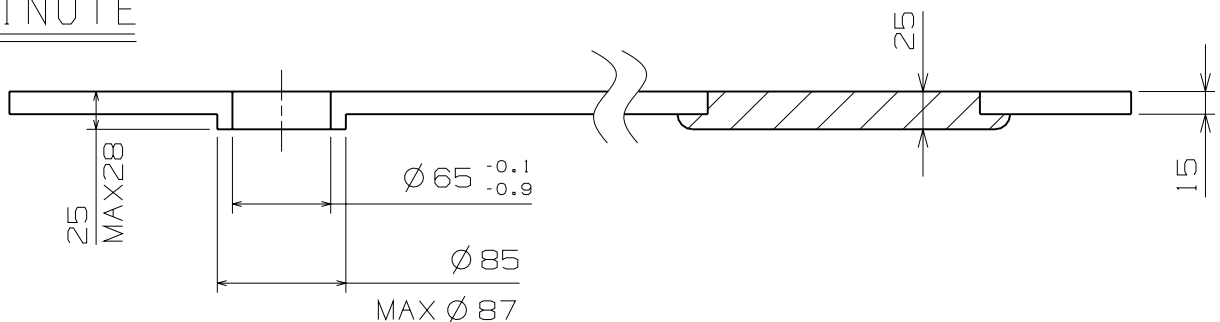
Scale : \neq
Unit : 1=1/100mm

Version : 1

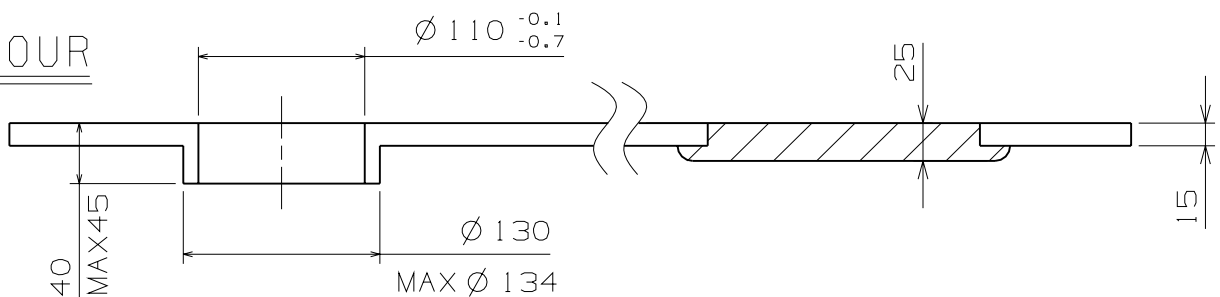
SECOND



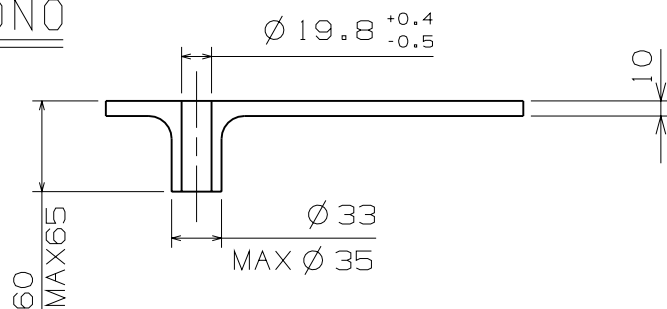
MINUTE



HOUR



CHRONO



Scale : 20/1
Unit : 1=1/100mm

Version : 1