

Watch Movement Specification and Drawing

MINI & SLIM

Cal. VX51E

Movement Size

6 3/4 × 8'''

Casing Diameter

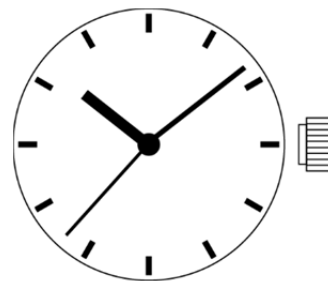
15.3 × 17.8 mm

Height

2.30mm

Battery Life

3 years



Date: 27/Feb./'15

Cal. VX51E

Items	Rev.	Page
Specifications	03	1
Appearance	04	2
Casing	02	3
Hand fitting	03	4
Hand setting stem	04	5
Dial	02	6
Casing ring	02	7

Analog Quartz 6 3/4 × 8''' Slim Movement / Three Hands(H/M/S)

1. MOVEMENT DIMENSIONS

Outside diameter	15.30mm(3-9H) × 18.20mm(12-6H)
Casing diameter	15.30mm(3-9H) × 17.80mm(12-6H)
Total height	2.30mm

2. TIME STANDARD

Type of quartz oscillator	Tuning fork
Frequency of quartz oscillator	32,768 Hz
Accuracy	±20 seconds per month (on wrist)
Operating temperature range	−5°C to +50°C
Regulation device	Nil (Pre-adjusted)

3. INDICATOR / FUNCTIONS

3 Hands	Hour / Minute / Second
Reset switch	
Setting mechanism	Crown at normal position : Free Crown pulled out 1st click : Time setting / Reset

4. FEATURES

Jewels	0 Jewels
Anti-magnetism	Over 1600A/m (Direct current magnetic field)
Maximum unbalance of hands	Hour hand : 0.5 μ N·m
	Minute hand : 0.6 μ N·m
	Second hand : 0.07 μ N·m

5. BATTERY

Type / Size	Silver oxide battery / φ 6.8mm × t 2.1mm
Recommended battery	SR621SW (Maxell, Sony, Seizaiken)
Nominal voltage	1.55 V
Battery life	Approx. 3 years
Driving current consumption	Approx. 0.80 μ A
Operation stopping voltage	0.8 V

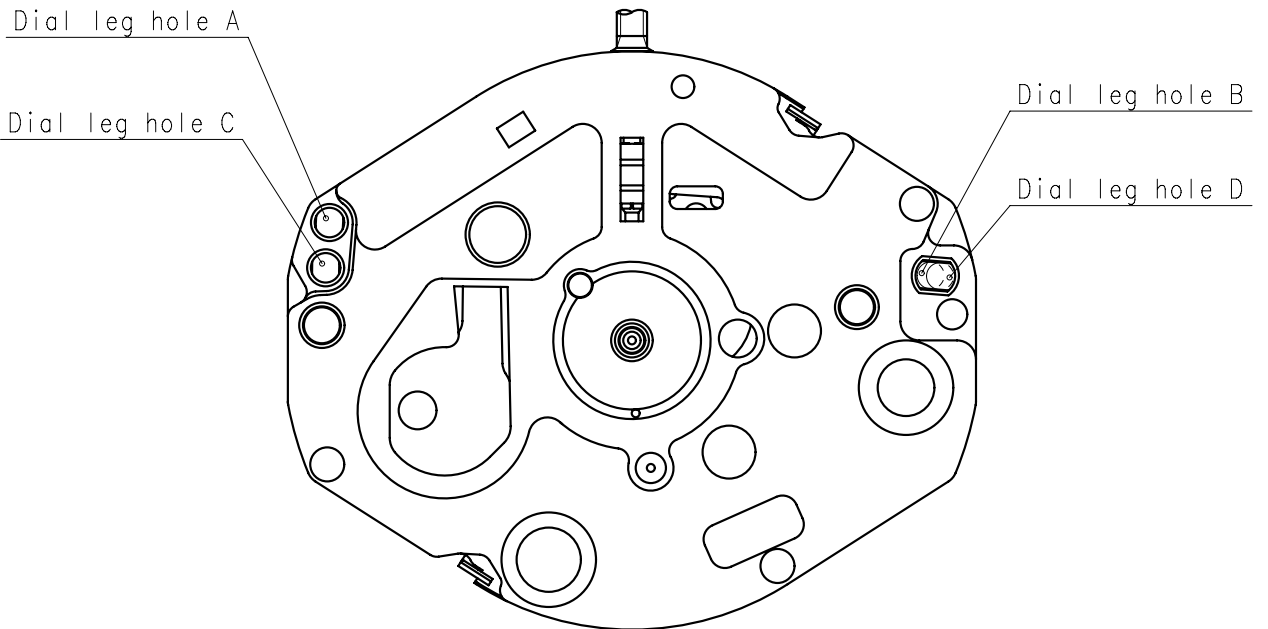
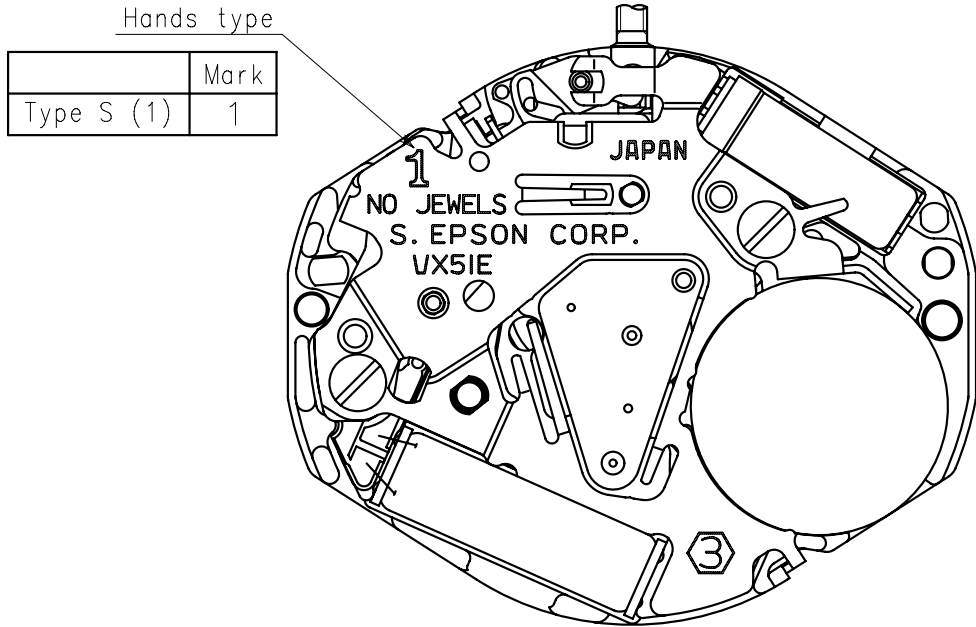
6. SEPARATED PARTS (Parts code)

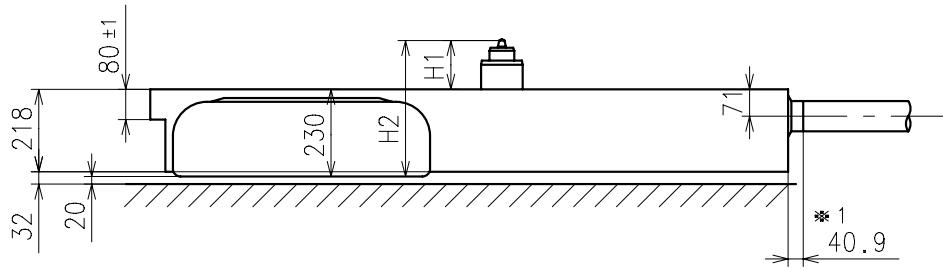
Hour wheel	0271908
Dial washer	0491735
Hand setting stem	0351178 or 0351881
Battery	SR621SW

7. TEST OF ACCURACY

Equipment to be used	SEIKO quartz tester QT-99, Greiner quartz timer-C , Witschi Q-tester 4000
Duration of measurement	10 seconds
Microphone to be used	Electromagnetic detection type

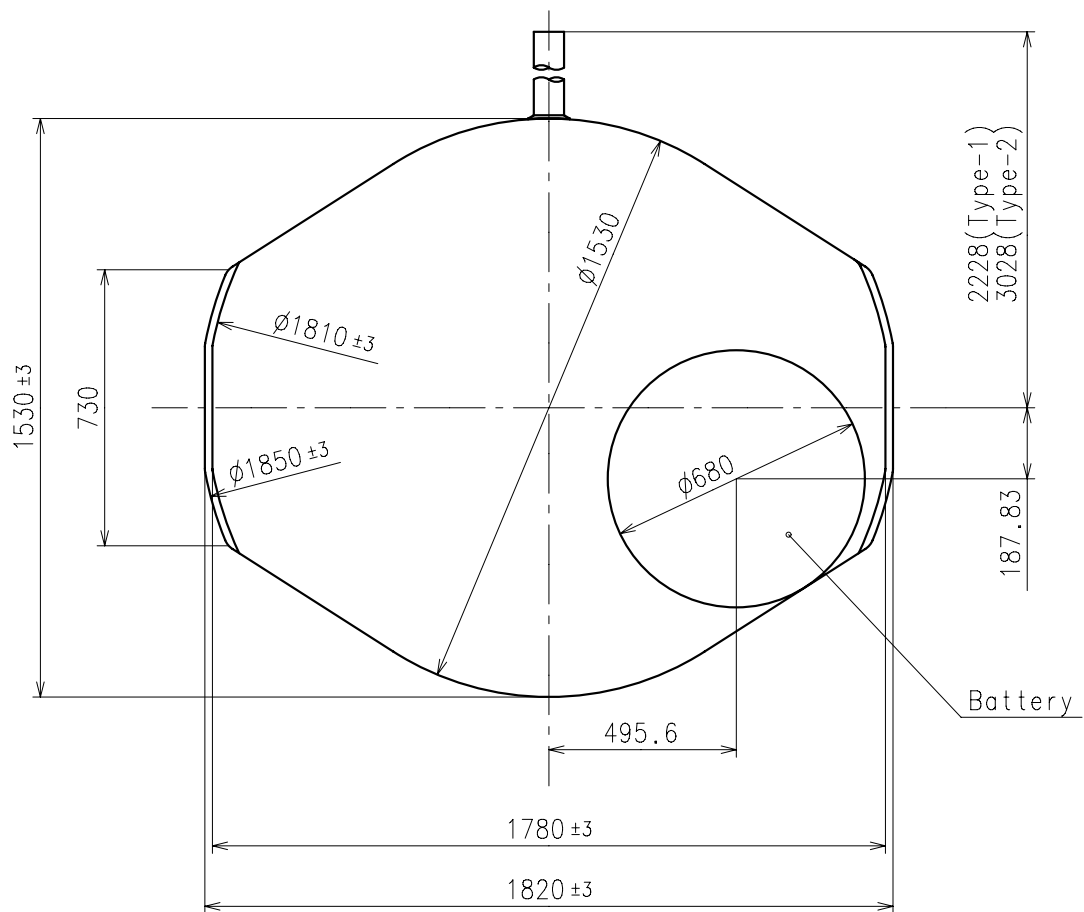
All specifications are subject to change without notice.



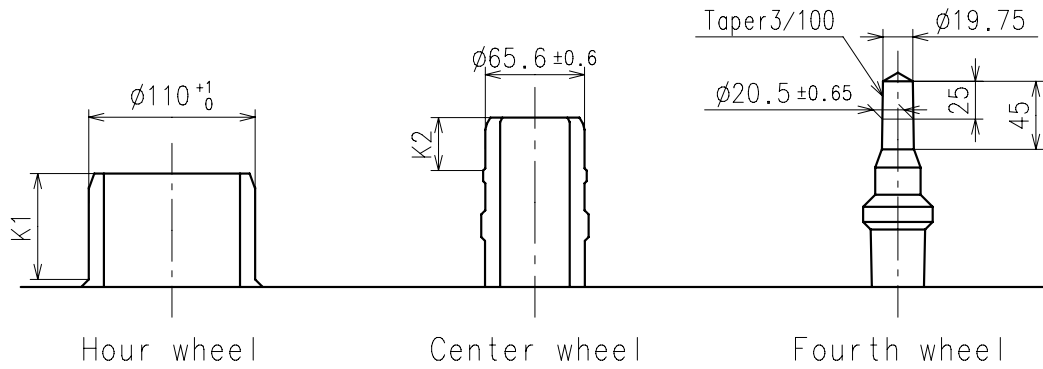


Center post		Type S (1) VX51E1S
Maximum height from dial support	H1	136
Total height including movement	H2	366

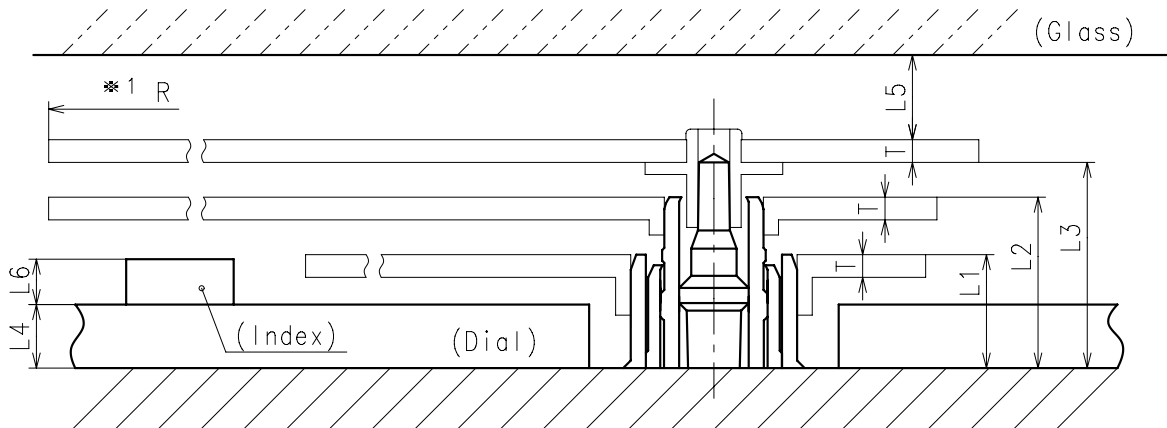
*1: Pull out stroke



- * Hour hand unbalance $\leq 0.50\mu \text{ N} \cdot \text{m} (50\mu \text{ g} \cdot \text{m})$
- * Minute hand unbalance $\leq 0.60\mu \text{ N} \cdot \text{m} (60\mu \text{ g} \cdot \text{m})$
- * Second hand unbalance $\leq 0.07\mu \text{ N} \cdot \text{m} (7\mu \text{ g} \cdot \text{m})$

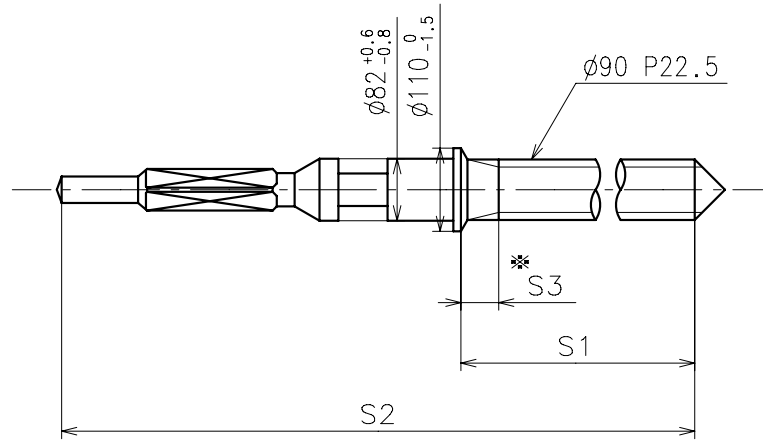


	Parts No.			Dimension	
	Hour wheel	Center wheel	Fourth wheel	K1	K2
Type S (1) VX51E1S	0271908	0221908	0241908	70	35



	L1	L2	L3	L4	L5	L6	T	*1 R
Type S (1) VX51E1S	75	113	136	40	MIN: 50	MAX: 30	15	MAX: 1250

*1: It is the size taken into consideration for hands attachment.
Please observe some standard value specified in unbalance when using long hands.

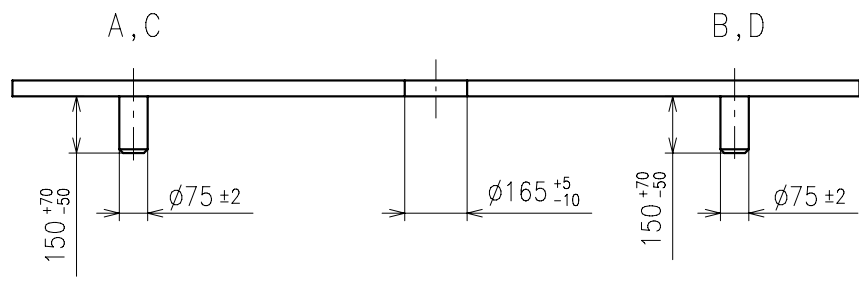
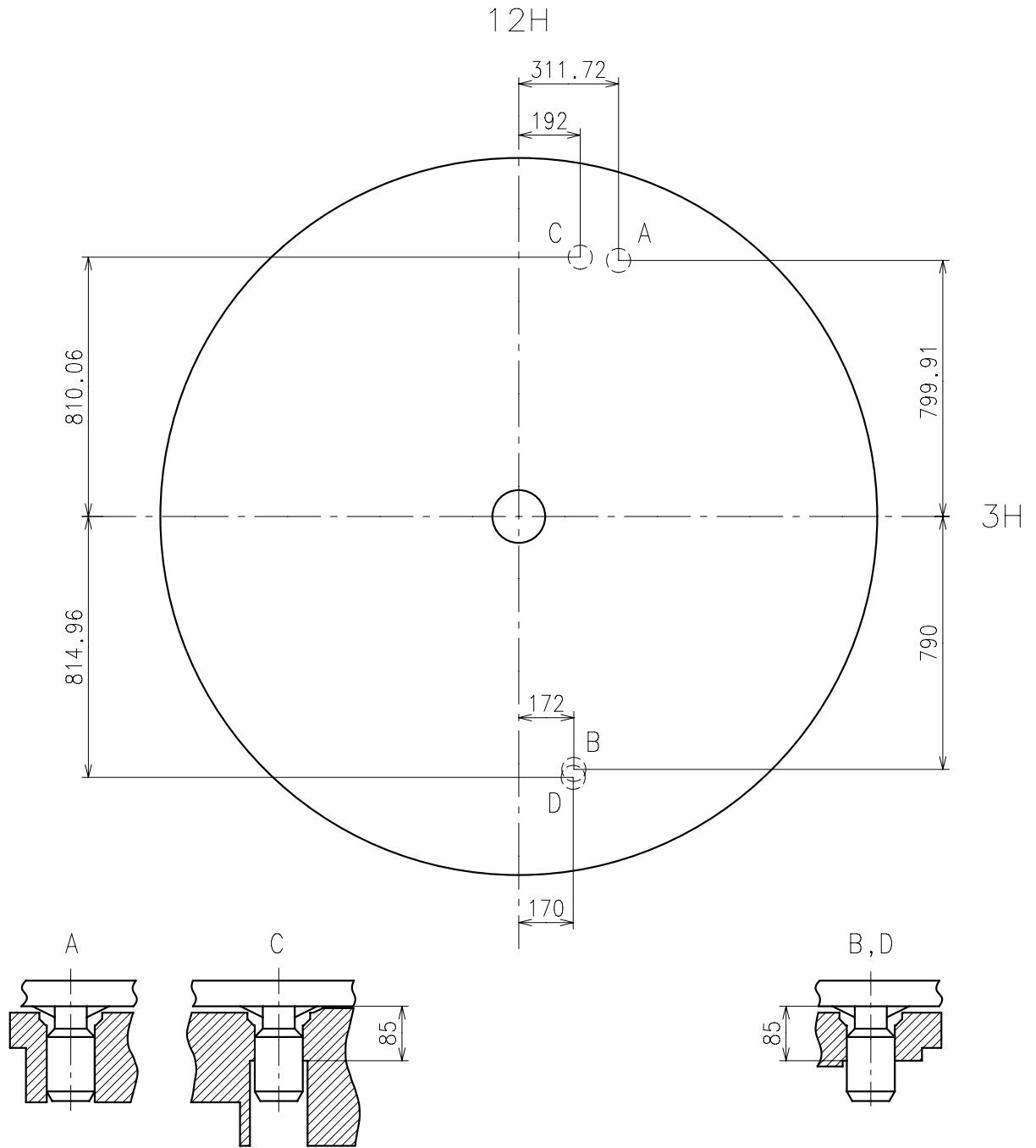


* Not threaded

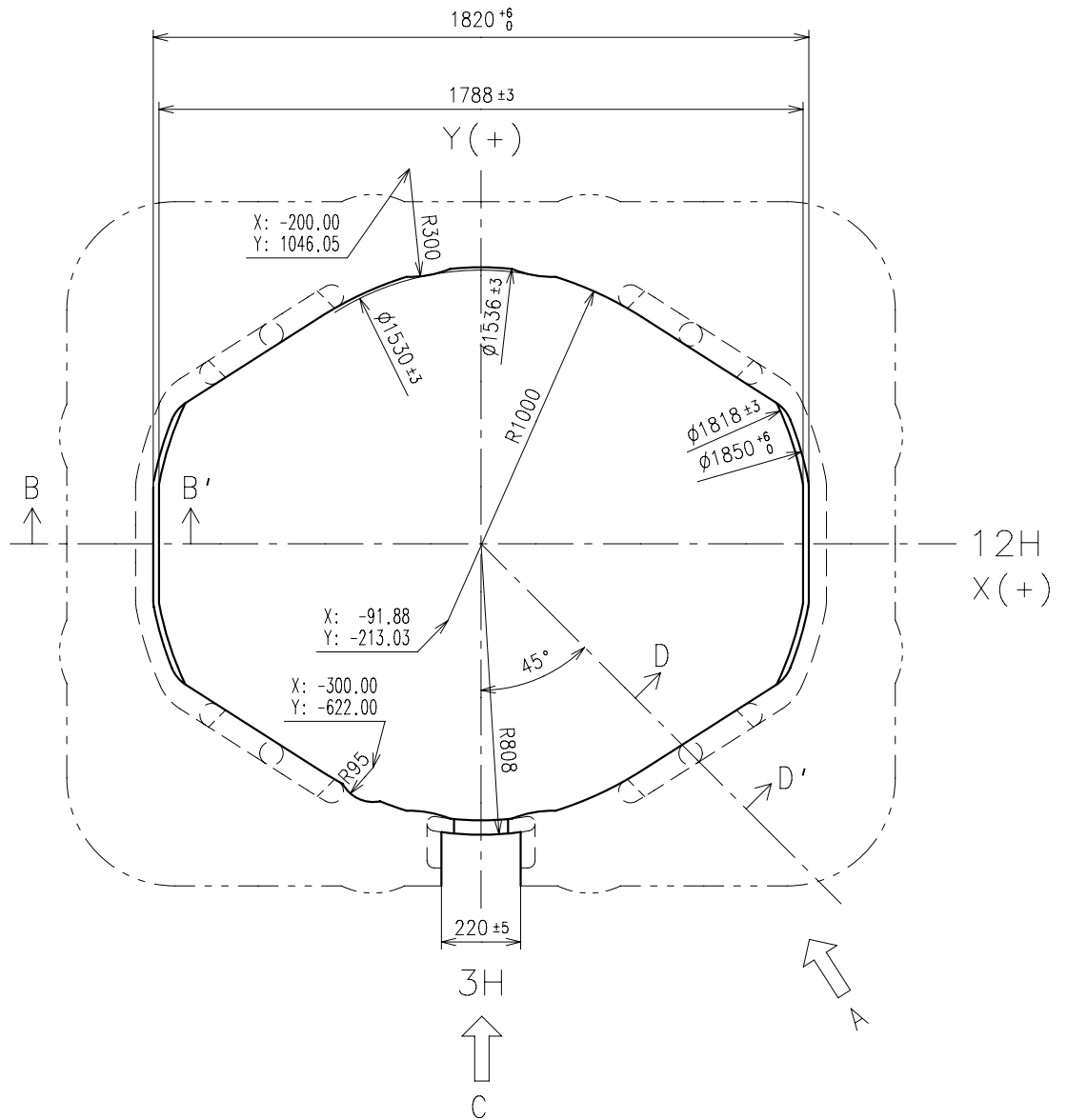
	Part No.	S1	S2	S3
Type-1 (Standard)	0351178	1463	1991	50
Type-2	0351881	2263	2791	840

Material : Steel

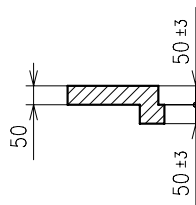
Hardness : Vickers 600±50



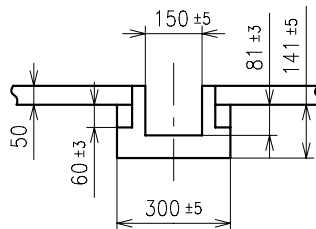
* Use dial leg A-B or C-D



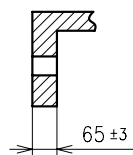
B-B' section



C view



D-D' section



A view

