

Watch Movement Specification and Drawing

CALENDAR

**Cal. VX89E**

Movement Size

**6 3/4 × 8'''**

Casing Diameter

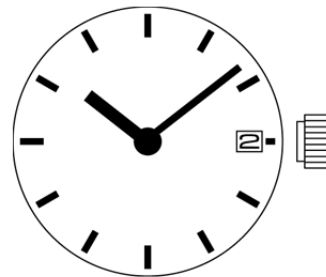
**15.3 × 17.4 mm**

Height

**2.75mm**

Battery Life

**3 years**



Date: 28/Feb./'14

# Cal. VX89E

Items	Rev.	Page
Specifications	03	1
Appearance	01	2
Casing	02	3
Hand fitting	01	4
Hand setting stem	02	5
Dial-01	01	6-01
Dial-02	01	6-02
Casing ring	01	7

**Analog Quartz 6 3/4 × 8''' Slim Movement / Two Hands (H/M) with Calendar**

**1. MOVEMENT DIMENSIONS**

Outside diameter	15.70mm(3-9H) × 17.80mm(12-6H)
Casing diameter	15.30mm(3-9H) × 17.40mm(12-6H)
Total height	2.75mm (including battery)

**2. TIME STANDARD**

Type of quartz oscillator	Tuning fork
Frequency of quartz oscillator	32,768 Hz
Accuracy	±20 seconds per month (on wrist)
Operating temperature range	−5°C to +50°C
Regulation device	Nil (Pre-adjusted)

**3. INDICATOR / FUNCTIONS**

2 Hands	Hour / Minute						
Calendar	Instant setting device for date calendar						
Reset switch							
Setting mechanism	<table style="width: 100%; border: none;"> <tr> <td style="width: 60%;">Crown at normal position</td> <td>: Free</td> </tr> <tr> <td>Crown pulled out 1st click</td> <td>: Instant date change</td> </tr> <tr> <td>Crown pulled out 2nd click</td> <td>: Time setting / Reset</td> </tr> </table>	Crown at normal position	: Free	Crown pulled out 1st click	: Instant date change	Crown pulled out 2nd click	: Time setting / Reset
Crown at normal position	: Free						
Crown pulled out 1st click	: Instant date change						
Crown pulled out 2nd click	: Time setting / Reset						

**4. FEATURES**

Jewels	0 Jewels				
Anti-magnetism	Over 1600A/m (Direct current magnetic field)				
Maximum unbalance of hands	<table style="width: 100%; border: none;"> <tr> <td style="width: 60%;">Hour hand</td> <td>: 0.5 μ N·m</td> </tr> <tr> <td>Minute hand</td> <td>: 0.6 μ N·m</td> </tr> </table>	Hour hand	: 0.5 μ N·m	Minute hand	: 0.6 μ N·m
Hour hand	: 0.5 μ N·m				
Minute hand	: 0.6 μ N·m				

**5. BATTERY**

Type / Size	Silver oxide battery / φ 6.8mm × t 2.1mm
Recommended battery	SR621SW (Maxell, Sony, Seizaiken)
Nominal voltage	1.55 V
Battery life	Approx. 3 years
Driving current consumption	Approx. 0.80 μ A
Operation stopping voltage	0.9 V

**6. SEPARATED PARTS (Parts code)**

Hand setting stem	0351177 or 0351578
Battery	SR621SW

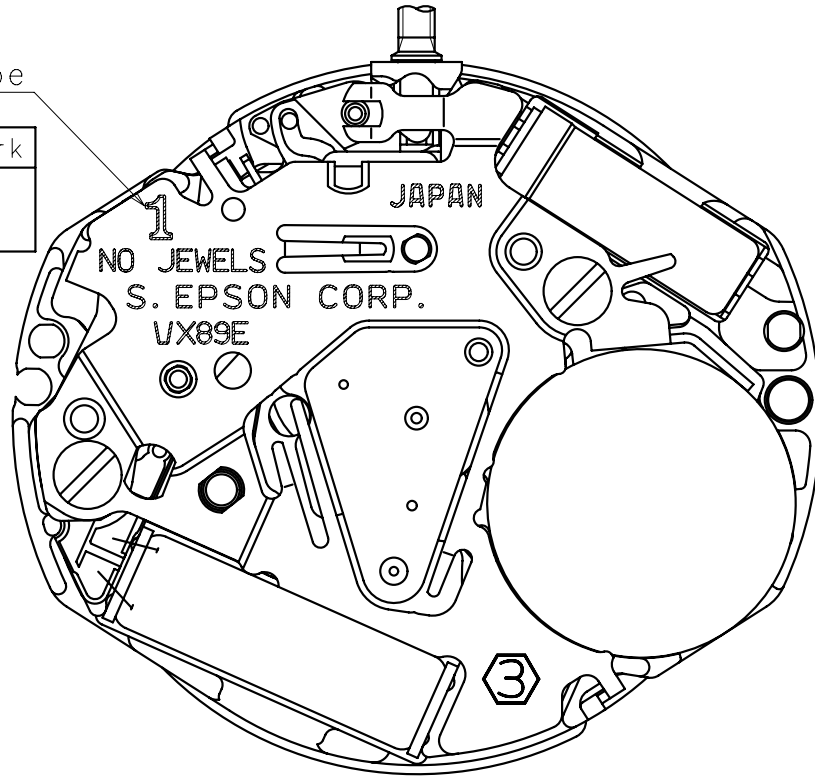
**7. TEST OF ACCURACY**

Equipment to be used	SEIKO quartz tester QT-99, Greiner quartz timer-C , Witschi Q-tester 4000
Duration of measurement	10 seconds
Microphone to be used	Electromagnetic detection type

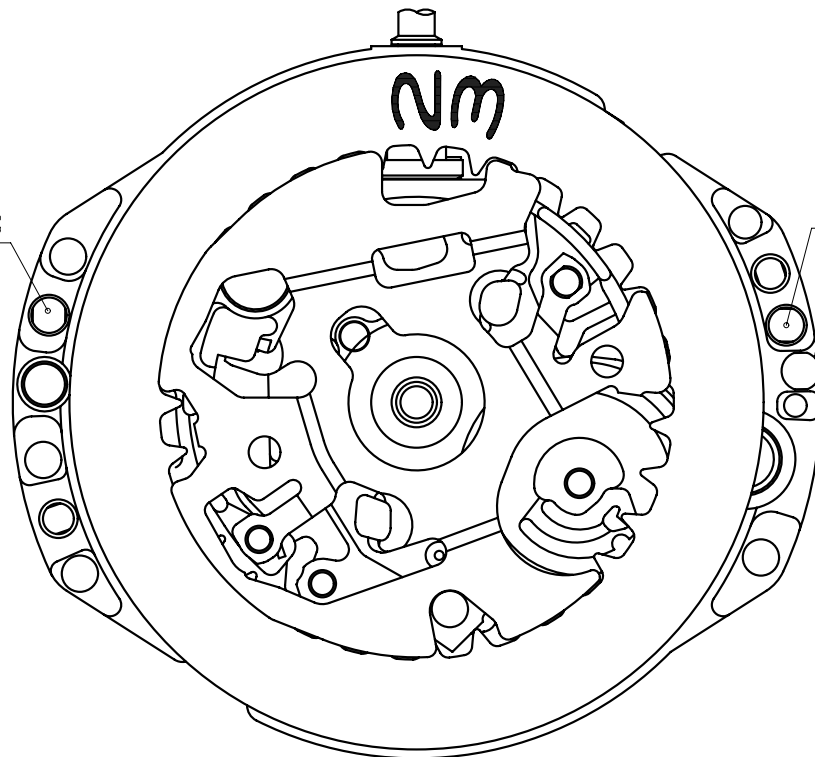
All specifications are subject to change without notice.

Hands type

	Mark
Type S (1) VX89E1**	1



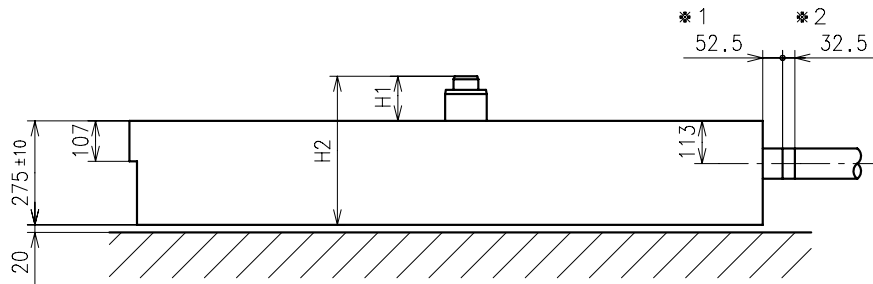
Dial leg hole B



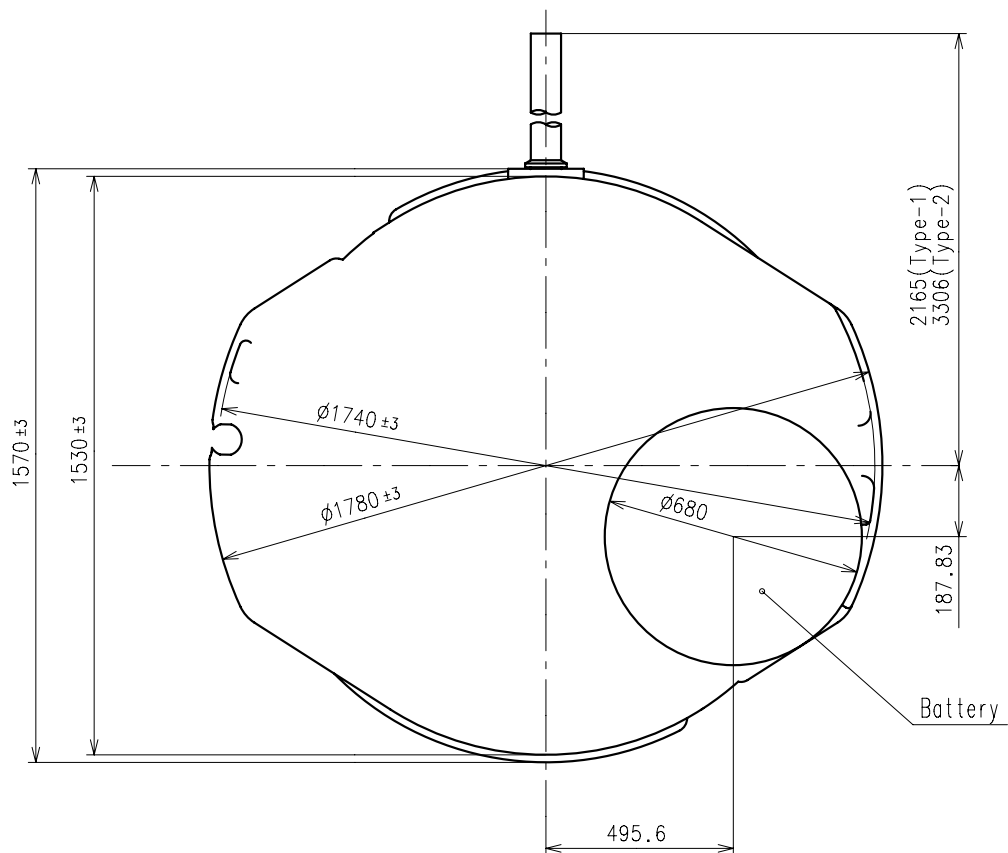
Dial leg hole A

\*1:First pullout stroke

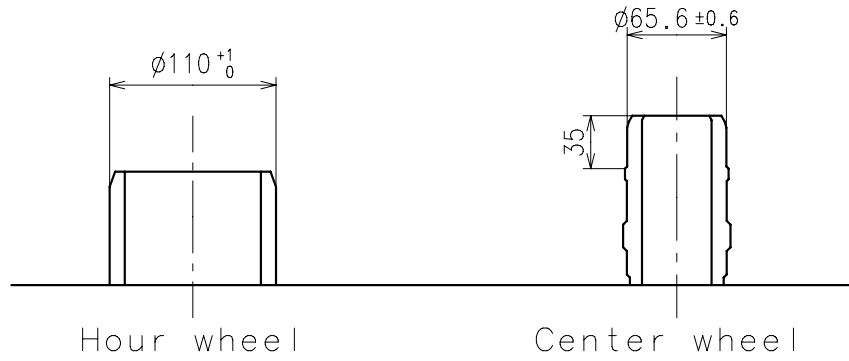
\*2:Second pullout stroke



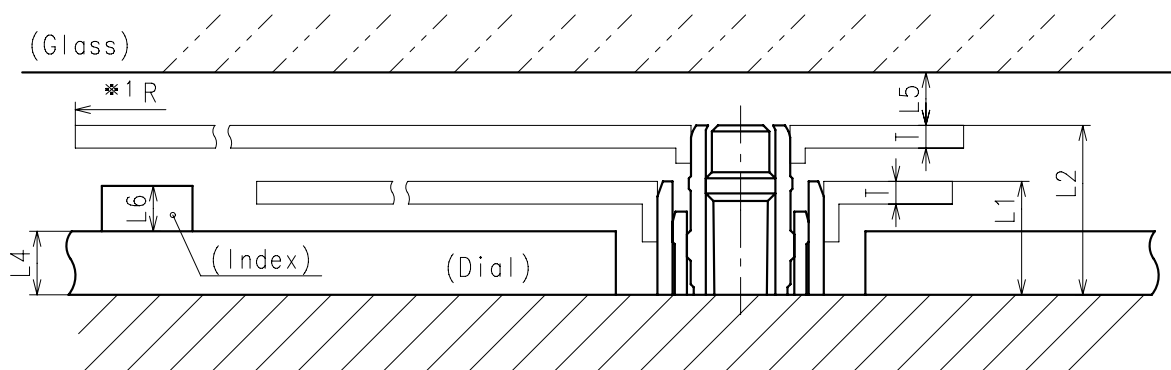
Center post		Type S (1) VX89E1**
Maximum height from dial support	H1	112
Total height including movement	H2	387



- \* Hour hand unbalance  $\leq 0.5\mu \text{ N} \cdot \text{m} (50\mu \text{ g} \cdot \text{m})$
- \* Minute hand unbalance  $\leq 0.6\mu \text{ N} \cdot \text{m} (60\mu \text{ g} \cdot \text{m})$

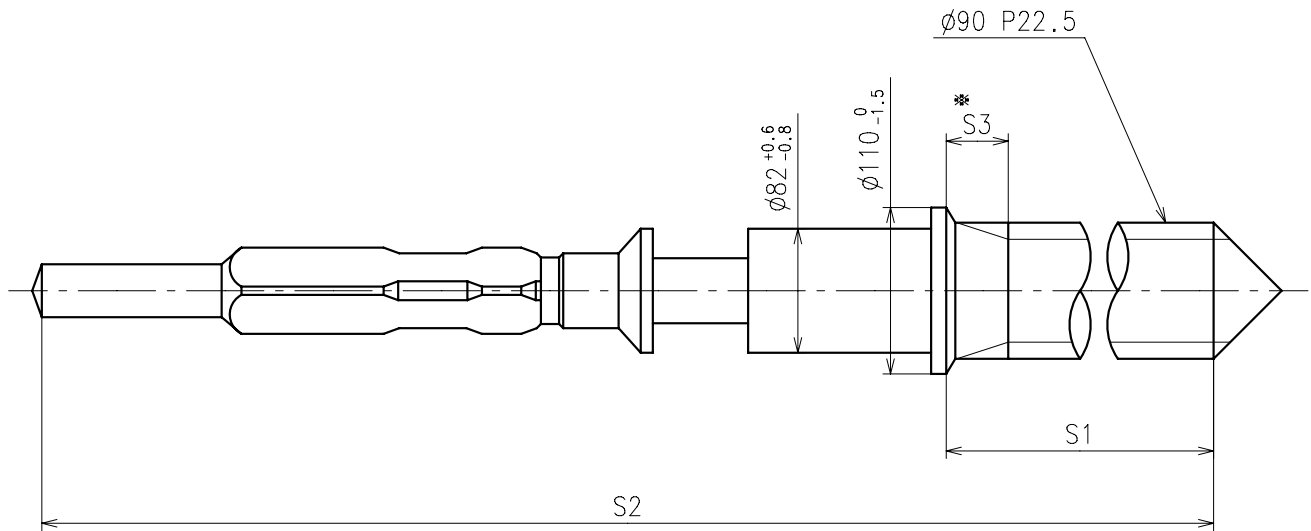


	Parts No.	
	Hour wheel	Center wheel
Type S (1) VX89E1**	0271929	0221929



	L1	L2	L4	L5	L6	T	*1R
Type S (1) VX89E1**	75	112	40	MIN: 35	MAX: 30	15	MAX: 1250

\*1: It is the size taken into consideration for hands attachment.  
Please observe some standard value specified in unbalance when using long hands.

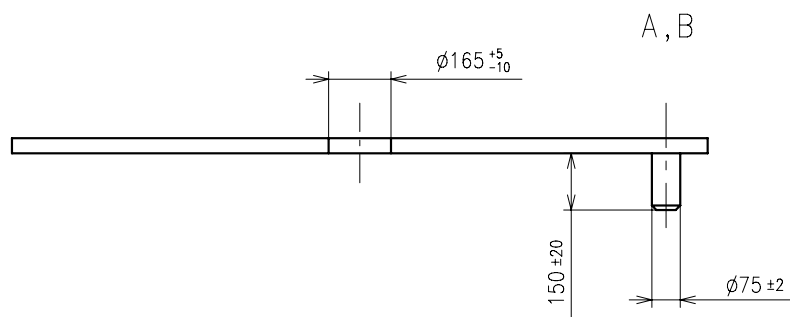
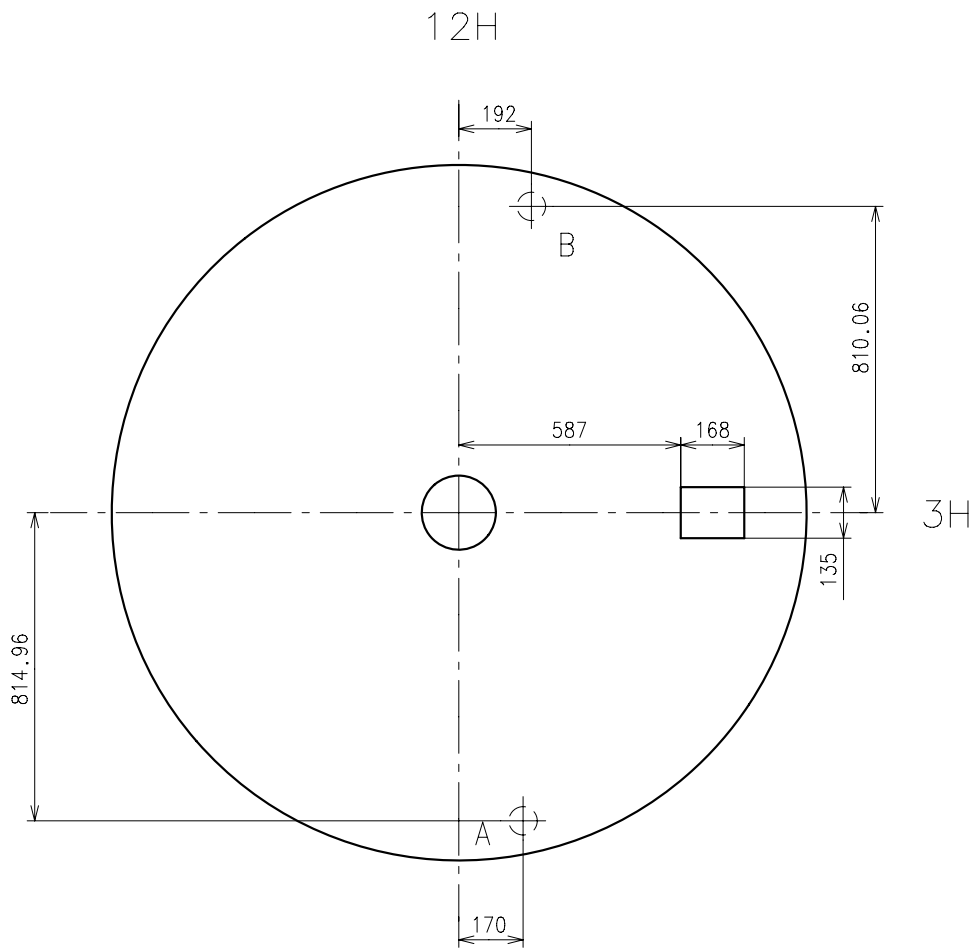


※ Not threaded

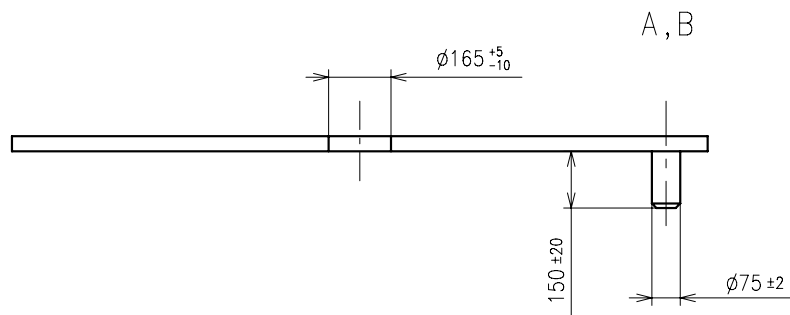
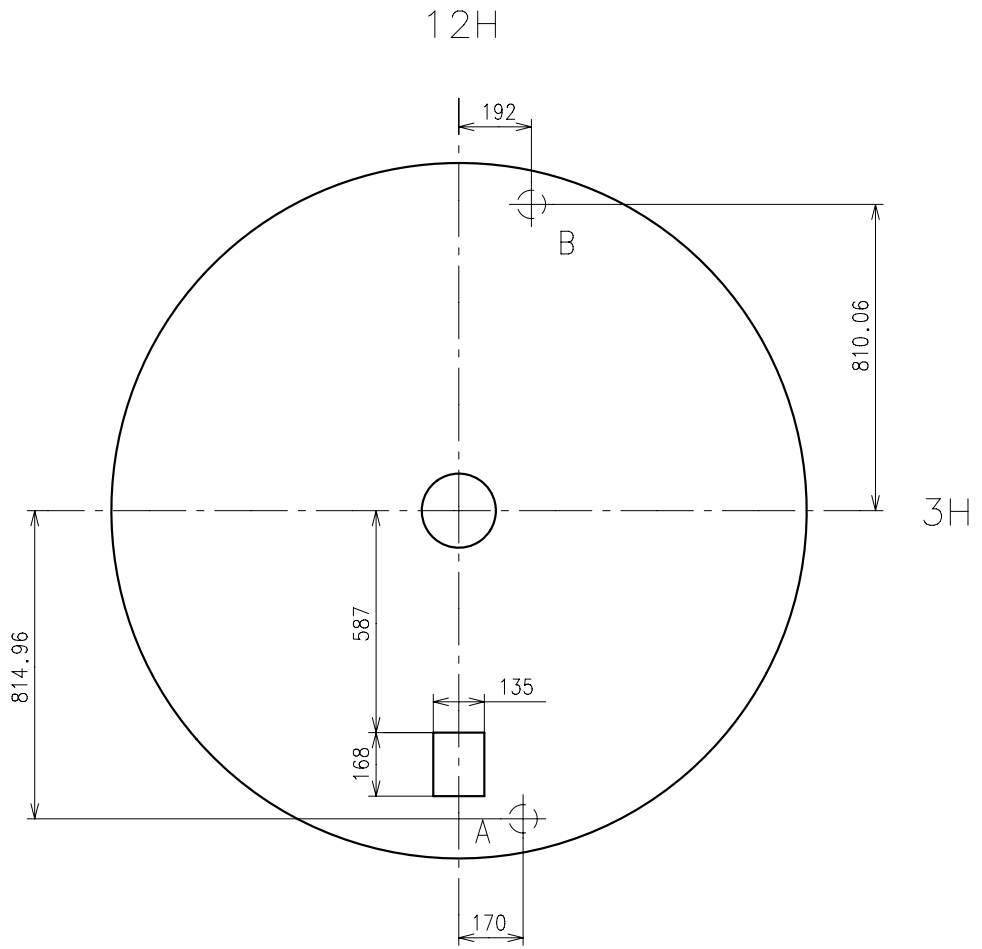
	Part No.	S1	S2	※ S3
Type-1 (Standard)	0351177	1366	1964	60
Type-2	0351578	2507	3105	650

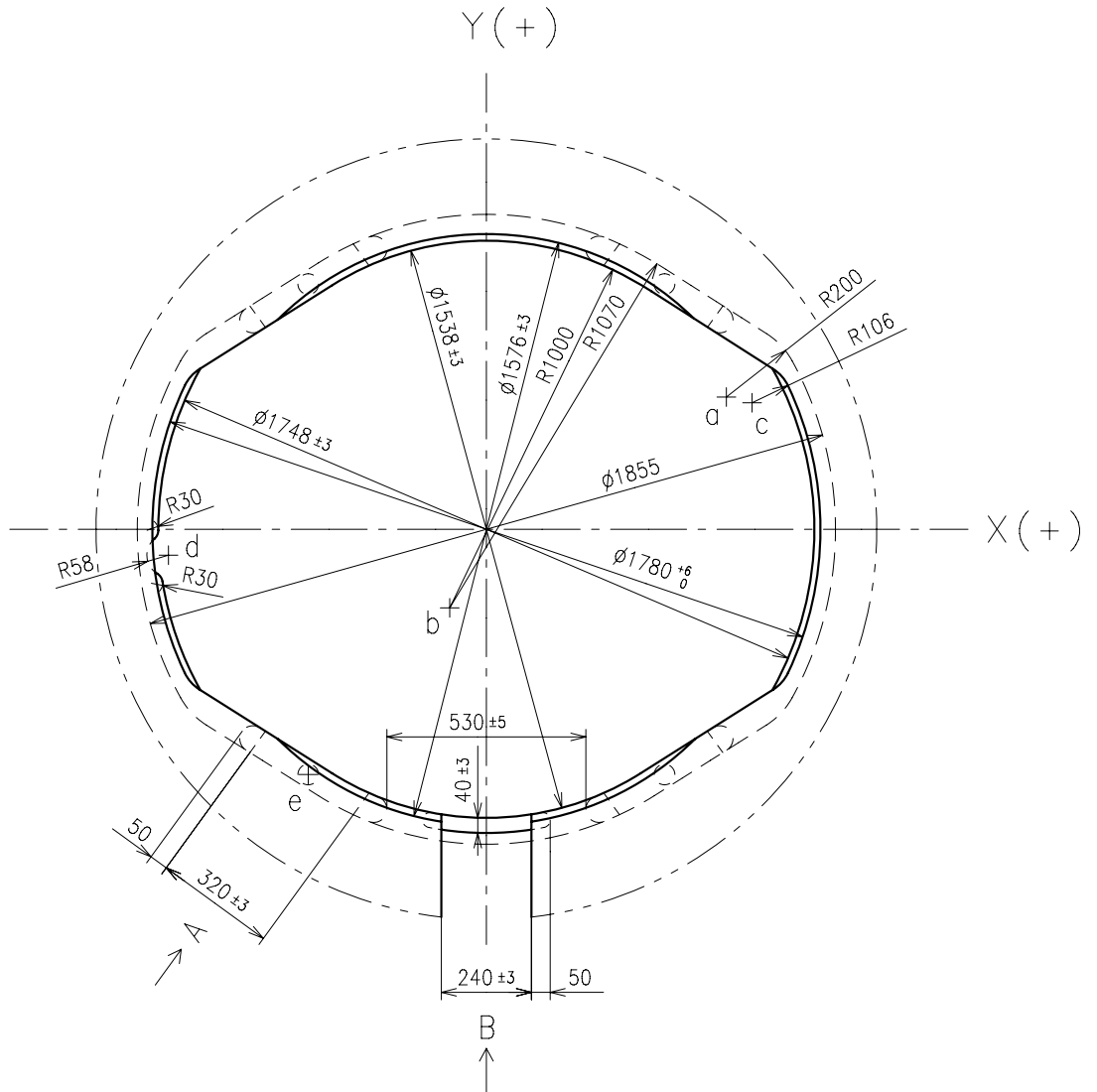
Material : Steel

Hardness : Vickers 600±50



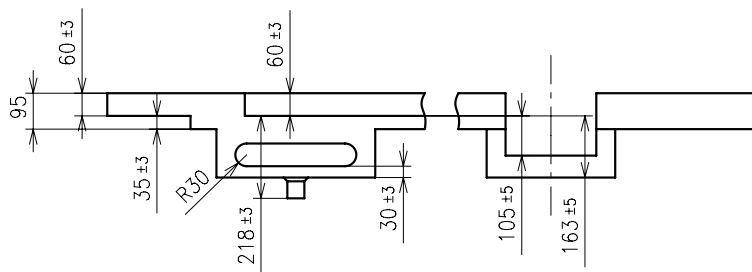






A view

B view



	X	Y
a	+639.35	+352.33
b	- 97.66	-209.34
c	+707.84	+337.08
d	-847.00	- 69.00
e	-474.61	-653.25